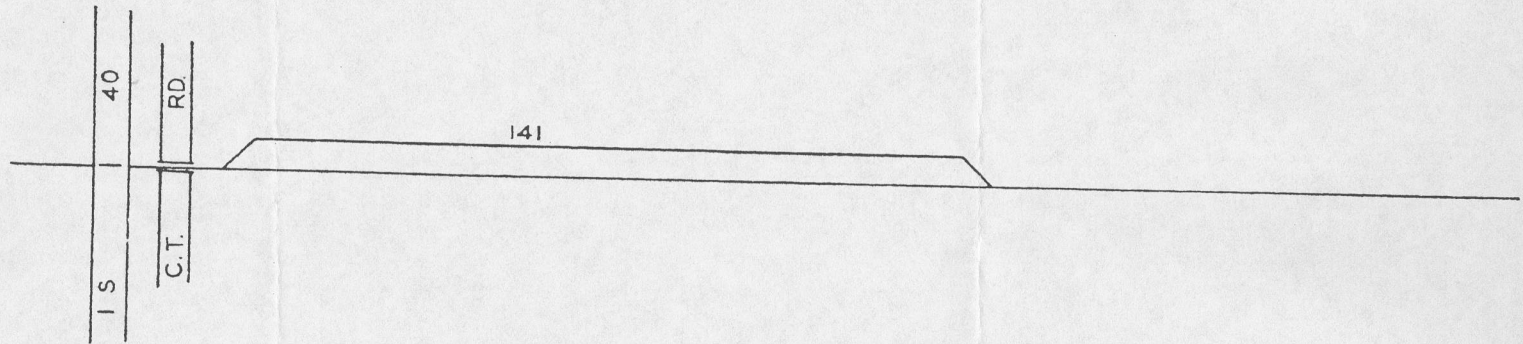


--408

CENTRAL DIVISION - FT. SMITH SUBDIVISION

COFF

— NORTH

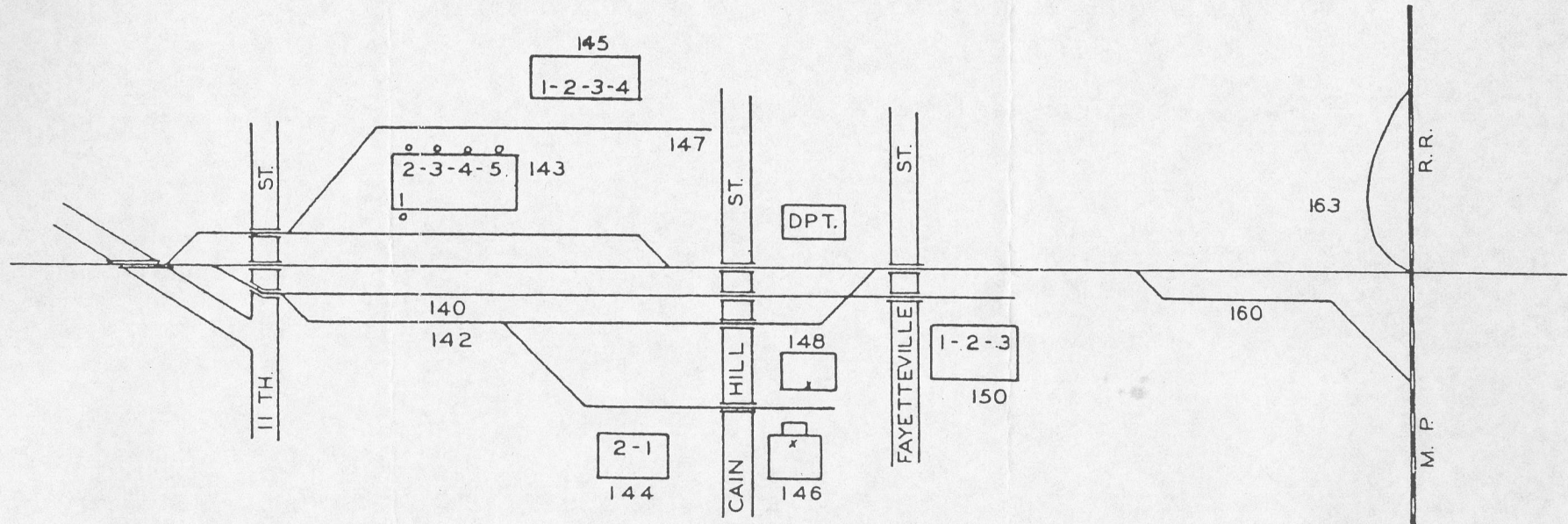


141 - Passing Track

CENTRAL DIVISION - FT. SMITH SUBDIVISION

VAN BUREN

NORTH



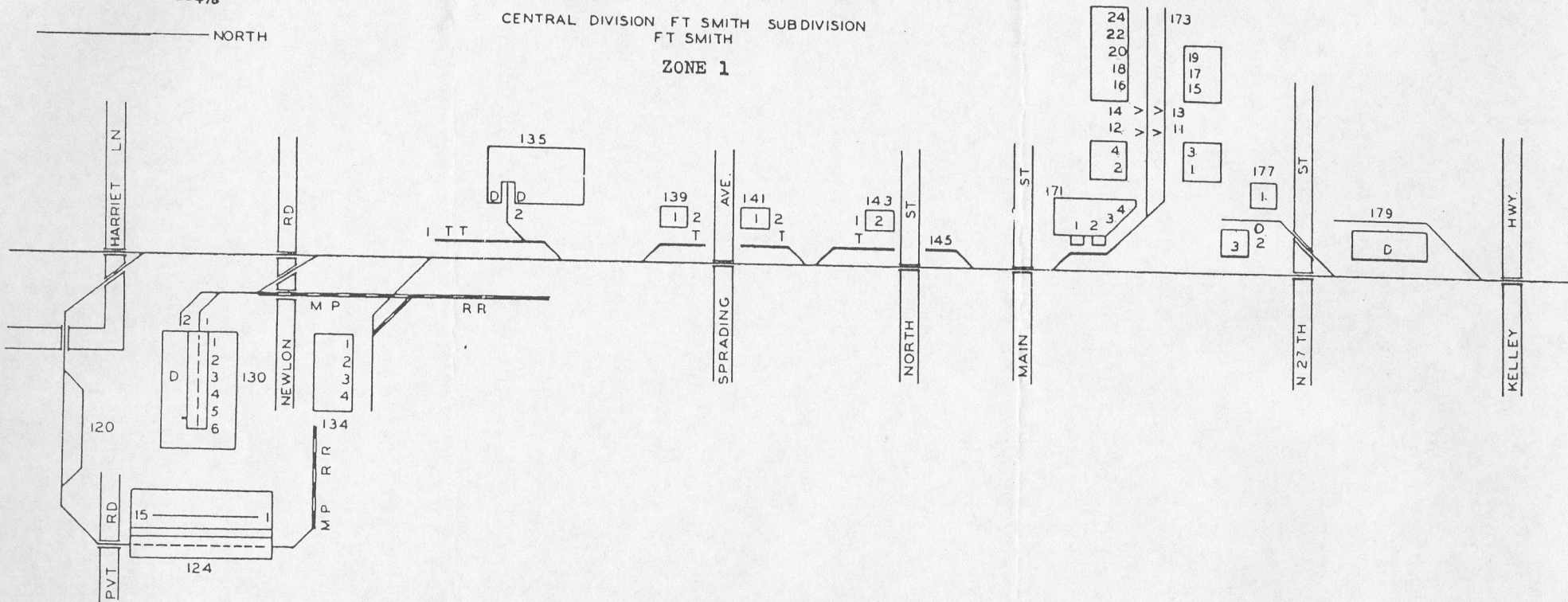
- 140 - Passing Track
- 142 - Storage Track
- 143 - Farmers Coop. Elevator
- 144 - Farmers Coop. Feed
- 145 - Farmers Coop. Fruit Shed
- 146 - Farmers Coop. Fertilizer Plant
- 147 - Team Track
- 147A - A.A.A. Lumber Co.
- 147B - Barber Construction Co., Inc.
- 147C - Crawford County Farm Bureau
- 147D - Farmers Coop.

- 147 - Team Track (contd.)
- 147E - Piles, Earl L.
- 147F - Southside Lumber Co.
- 147G - Van Buren Feed Co.
- 148 - Johnson Bros. Seed Co.
- 150 - Ballentine Produce Co.
- 160 - Interchange Track MoP
- 163 - Connection Track MoP

--416

NORTH

CENTRAL DIVISION FT SMITH SUBDIVISION
FT SMITH
ZONE 1



CENTRAL DIVISION - FT. SMITH SUBDIVISION

FT. SMITH

ZONE 1

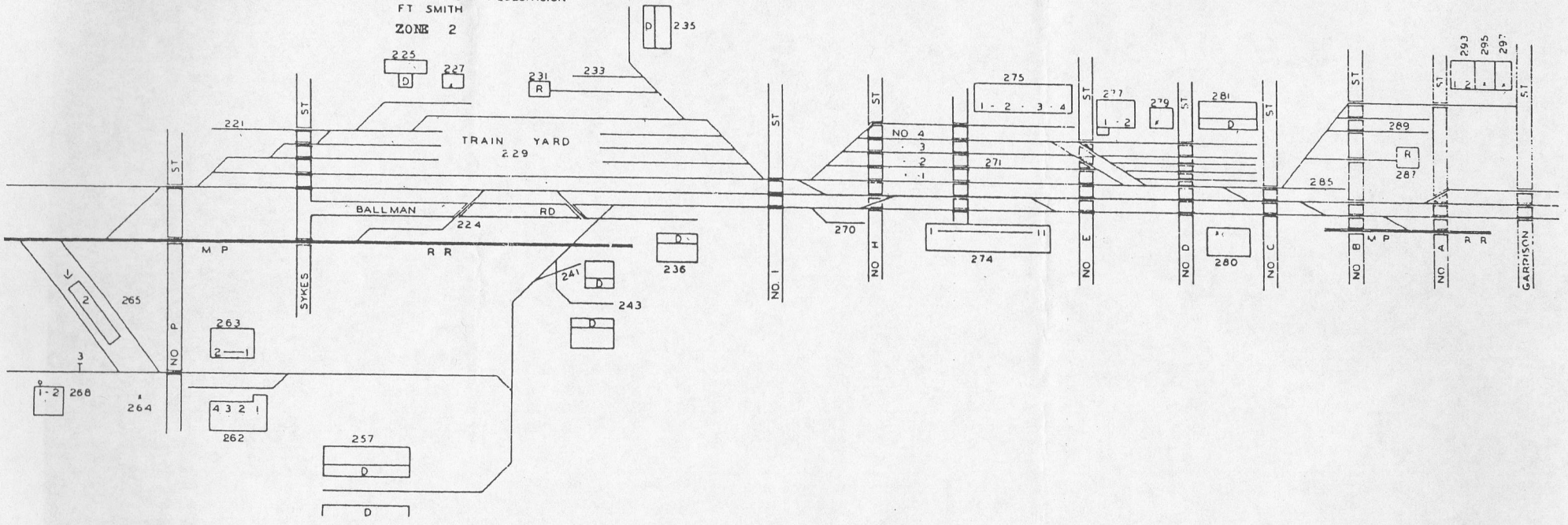
- 120 - Rumaround Track
- 124 - Garber Products Co.
- 130 - Mead Containers, Divn. of the Mead Corp.
- 134 - Hoerner Boxes, Inc.
- 135 - Dixie Cup, Divn. of Amer. Can Co.
1 - Wax Spot 2 - Warehouse
- 139 - Gulf Oil Co.
- 141 - Lion Oil Co.
- 143 - Humble Oil Co.
- 145 - Spur Track
- 171 - Long-Bell, Divn. International Paper Co.
- 173 - Harding Glass Co.
- 177 - Tucker Duck & Rubber Co.
- 179 - Ft. Smith Rim & Bow Co.

--4K

NORTH

CENTRAL DIVISION FT SMITH SUBDIVISION
FT SMITH

ZONE 2



CENTRAL DIVISION - FT. SMITH SUBDIVISION

FT. SMITH

ZONE 2

- 221 - Storage Spur
- 224 - MoP Interchange Track
- 225 - Hendricks Sales Co.
- 227 - Chisom Lumber Co.
- 229 - Train Yard
- 231 - Piggyback Ramp

- 233 - Cleaning Track
- 233A - Southwestern Bell Telephone Co.

- 235 - Ft. Smith Chair Co.
- 236 - Dixie Cup, Divn. of Amer. Can Co., Whse. No. 2
- 241 - Ballman Cummings Furniture Co. (Spur)
- 243 - Ballman Cummings Furniture Co. (Spur)
- 257 - Federal Compress
- 262 - Acme Spring Bed & Mattress Co.
- 263 - Hickory Springs Manufacturing Co.
- 264 - Arkansas Paper Co.
- 265 - Arko Briquettes, Inc.
- 268 - Albers Milling Co.
- 270 - Spur Track
- 271 - Storage Yard (4 Tracks)
- 274 - Riverside Terminal Warehouse
- 275 - Eads Bros. Furniture Co.
- 277 - Arkansas Waste Paper Co.
- 279 - Spenn Dry Ice Co.
- 280 - Ward Beverage Co.
- 281 - Freight House

- 285 - Old Auto Track
- 285A - Arkansas-Oklahoma Mud & Bit Co.

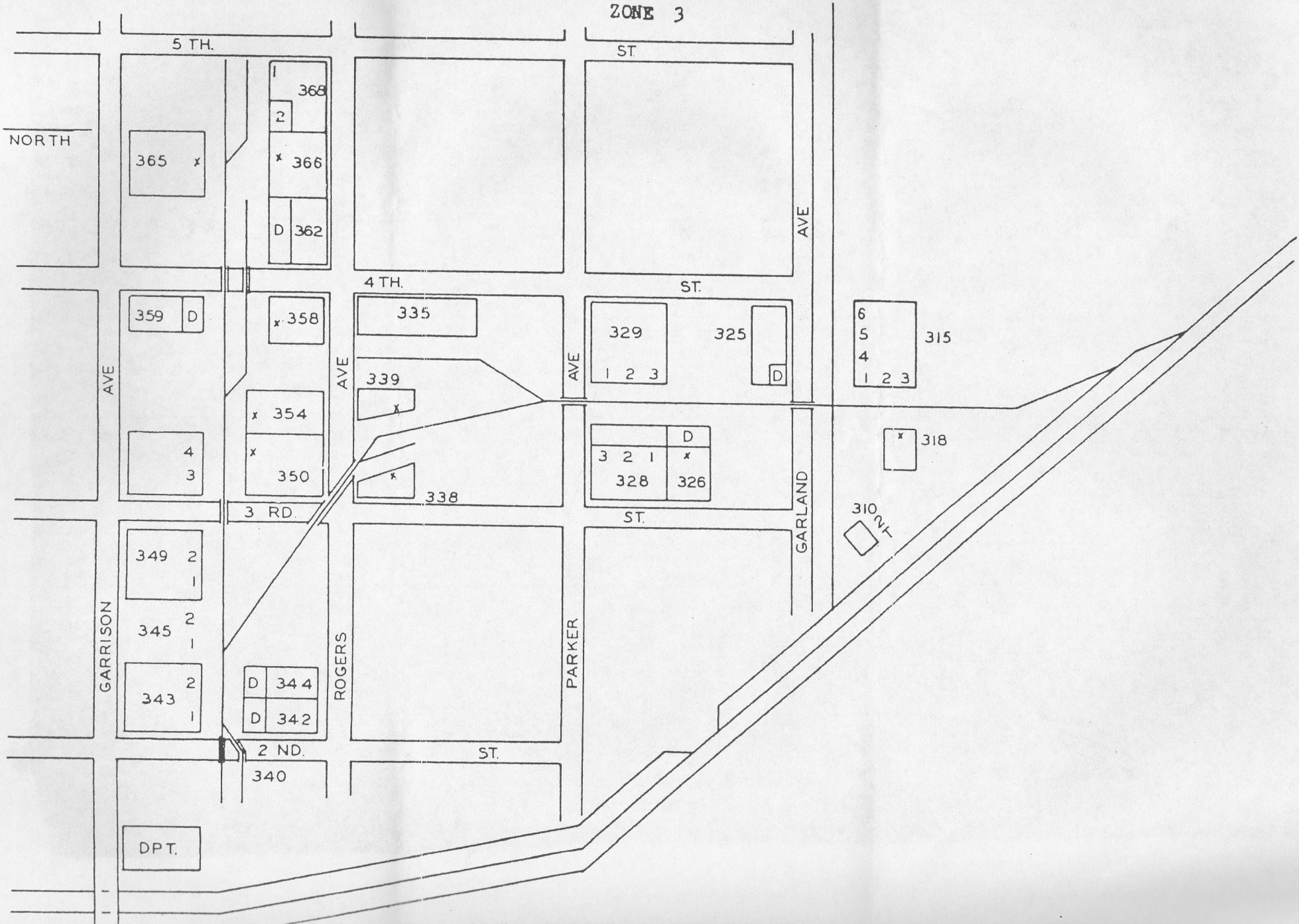
- 287 - New Auto Dock
- 287A - Ft. Smith Vehicle Co.
- 287B - Modern Tractor Co.
- 287C - Walker-Gamble Tractor Co.

- 289 - Team Tracks (Nos. 1 & 2)
- 289A - Arcade Furniture Co.
- 289B - Crampton, Dale, Co.
- 289C - Davis Furniture Co.
- 289D - Ft. Smith Street Dept.
- 289E - Ft. Smith Gas Corp.
- 289F - Goff Transfer & Delivery
- 289G - Grand Rapids Furniture Co.
- 289H - Halliburton Co.
- 289I - Hardin, T. C., Nursery Co.
- 289J - Manhattan Construction Co.
- 289K - Pepsi-Cola Bottling Co.
- 289L - Smith & McLendon Lumber & Supply Co.
- 289M - Simco, Chas.
- 289N - Weldon, Williams & Lick, Inc.
- 289O - Western Union Telegraph Co.

- 293 - Grain Sales Co. Warehouse
- 295 - Acme Transfer & Storage
- 297 - R.M.B. Produce Co.

CENTRAL DIVISION - FT. SMITH SUBDIVISION

FT. SMITH
ZONE 3



CENTRAL DIVISION - FT. SMITH SUBDIVISION

FT. SMITH

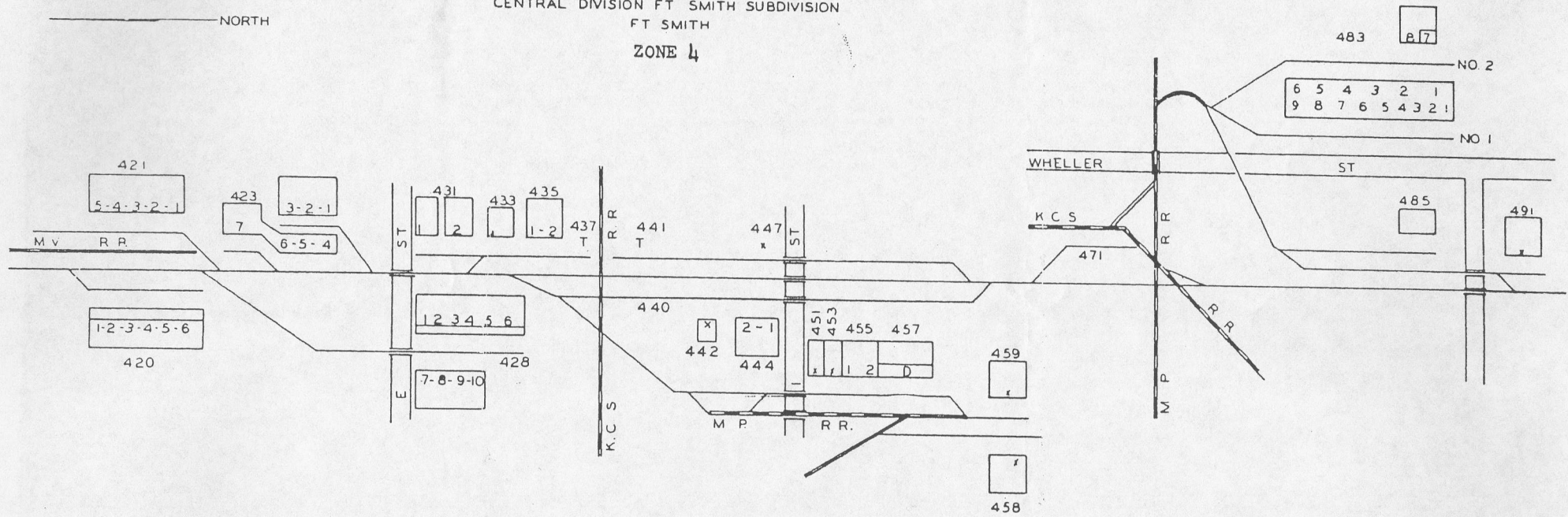
ZONE 3

- 310 - Lewis Oil Co., No. 1
- 315 - Gunn Distributing Co., Inc.
- 318 - Lewis Oil Co., No. 2
- 325 - Consolidated Poultry Co.
- 326 - Walt's Produce Co.
- 328 - Ford Wholesale Grocery Co.
- 329 - Sears, Roebuck & Co.
- 335 - Williams Hardware Co.
- 338 - Ft. Smith Paper Co.
- 339 - Allied Distributing Co.
- 340 - Open
- 342 - O.K. Transfer & Storage Co.
- 343 - Woods Manufacturing Co.
- 344 - Speer Hardware Co.
- 345 - Berry Dry Goods Co.
- 349 - Checkered Transfer & Storage Co.
- 350 - McKesson-Robbins, Inc.
- 354 - Ft. Smith Tobacco & Candy Co.
- 358 - Two States Janitor & Supply Co.
- 359 - Open
- 362 - Armour & Co.
- 365 - Eads Bros. Furniture Co. (Store)
- 366 - Eads Bros. Furniture Co. (Warehouse)
- 368 - Swift & Co.

--416

NORTH

CENTRAL DIVISION FT SMITH SUBDIVISION
FT SMITH
ZONE 4



CENTRAL DIVISION - FT. SMITH SUBDIVISION

FT. SMITH

ZONE 4

- 420 - Riverside Furniture Mfg. Corp.
- 421 - Okla Homer Smith Furn. Mfg. Co., Inc., No. 2
- 423 - Okla Homer Smith Furn. Mfg. Co., Inc., No. 1
- 428 - Flanders Manufacturing Co.
- 431 - Interstate Electric Co.
- 433 - Pruitt Tool & Supply Co.
- 435 - Sinclair Refining Co.
- 437 - Texaco, Inc.
- 440 - West Storage Track
- 441 - Phillips Petroleum Co.
- 442 - Rainwater Warehouse
- 442A - Norge, Divn. Borg-Warner Corp.

- 444 - T. J. Smith Box Co.
- 447 - Bogoslavsky & Sons (Iron & Metal)
- 451 - Contractors Glass Co., Inc.
- 453 - Arkla Chem. Corp. Bulk Plant
- 455 - Bailes Best Made Dog Food Co.
- 457 - Moldwood Plastics Prod. Corp.
- 458 - Foster Bros. Manufacturing Co.
- 459 - Open
- 471 - KCS Interchange
- 483 - Williams Manufacturing Co.
- 485 - Rath Packing Co.
- 491 - Warmack & Fitts Steel Co.

CENTRAL DIVISION - FT. SMITH SUBDIVISION

FT. SMITH

ZONE 5 (including Ruge & Fenn)

NORTH

- 531 - Open
- 561 - Ruge Team Track
- 561A - Fox Manufacturing Co.
- 561B - Furniture & Carpet City
- 561C - Walter, Jim, Corp.

- 585 - Storage Tracks
- 589 - Norge Team Track
- 589A - Farnam Lumber Co.
- 589B - Southside Lumber Co.

591 - Norge, Divn. Borg-Warner Corp.

