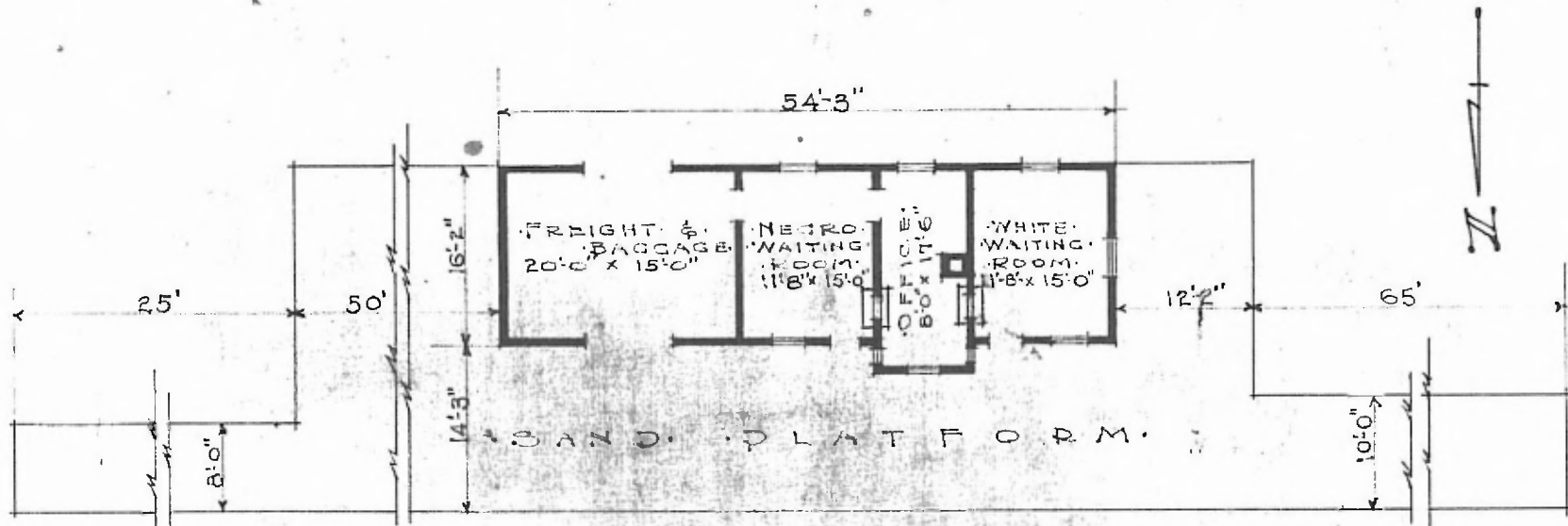


78

·ERECTED· 1903
 ·TYPE· FRAME
 ·FOUNDATION· WOOD BLOCKS.
 ·WALLS· 2"x6"
 ·ROOF· (TYPE: GABLE, SHINGLES.
 PITCH: 1/4
 ·HEATING· STOVES.

·FLOOR· 7" x 3 1/4" Y.P.
 ·FINISH· (INSIDE: 3/2" x 5 1/4" M. & B.
 OUTSIDE: BOARDS & BATTENS.
 ·CEILING HEIGHT· 11'-4"
 ·LIGHTING· OIL LAMPS.
 ·SANITARY FACILITIES· OUTSIDE TOILETS.

DIV. SOUTHERN
 SUB. DIV. BIRMINGHAM
 ST. B. NO. 642



·FLOOR PLAN·
 SCALE 1/16" = 1'-0"

·COMBINATION STATION·
 ·BEAVERTON ALA·

JULY 2, 1919.