

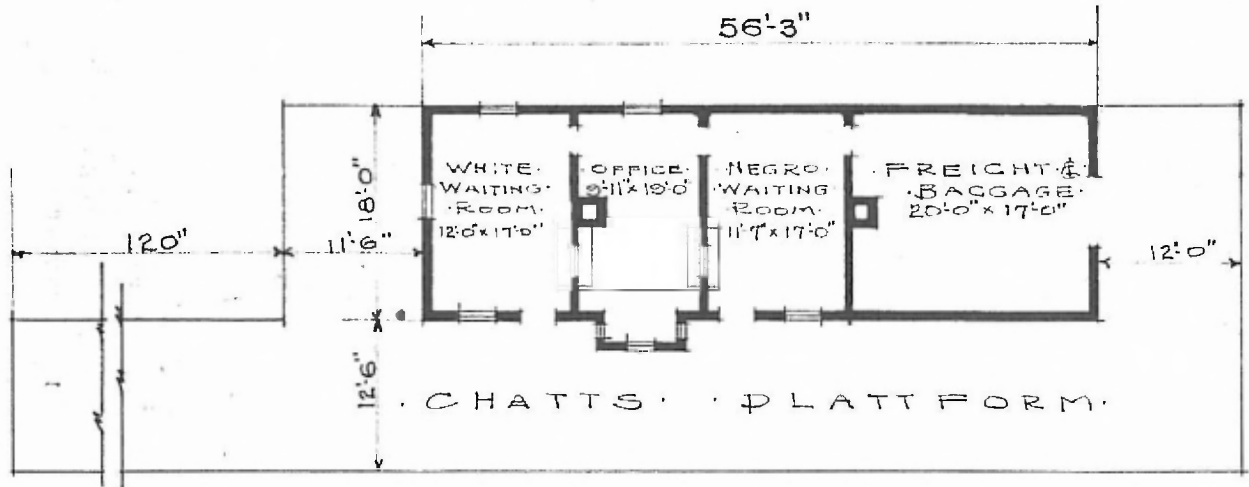
ERECTED.
 TYPE.
 FOUNDATION.
 WALLS.
 ROOF. { TYPE.
 PITCH: }
 HEATING.

FRAME.
 PILE HEADS
 2"x6"
 GABLE, SHINGLES
 $\frac{1}{4}$
 STOVES.

FLOOR.
 FINISH. { INSIDE.
 OUTSIDE.
 CEILING HEIGHT.
 LIGHTING.
 SANITARY FACILITIES.

DIV. SOUTHERN
 Y.P. SUB. DIV. BIRMINGHAM
 $\frac{1}{8}$ " x $\frac{3}{4}$ "
 $\frac{3}{4}$ " x $\frac{3}{4}$ " M. & B. STA. NO. C-669
 BOARDS & BATTENS
 10'10"
 OIL LAMPS
 OUTSIDE TOILETS.

83



FLOOR PLAN.
 SCALE $\frac{1}{16}$ " = 1'-0".

COMBINATION STATION.
 ELDRIDGE ALA.

JUNE 29, 1919