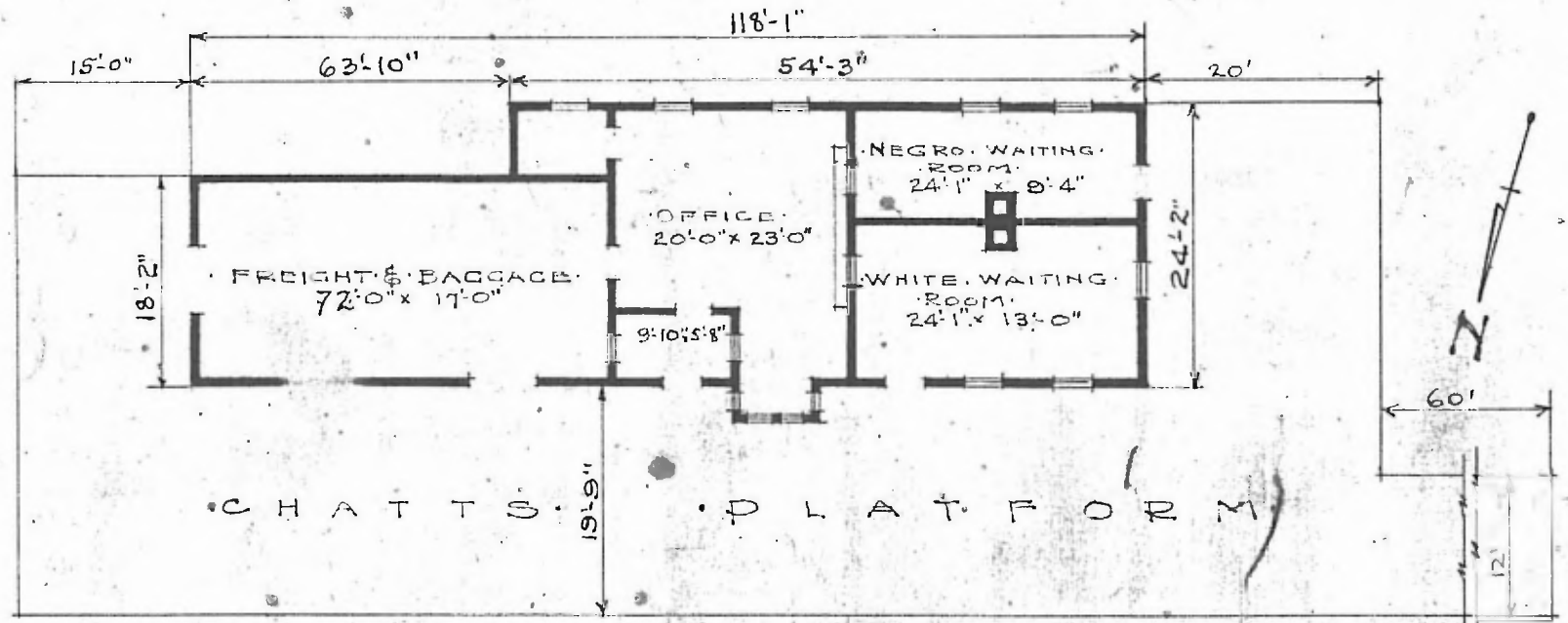


76

ERECTED: 1887
 TYPE: FRAME
 FOUNDATION: WOOD BLOCKS
 WALLS: 2"x6"
 ROOF: TYPE: GABLE SHINGLES.
 PITCH: 1/4
 HEATING: STOVES

FLOOR: 3/8"x3/4" Y.P.
 FINISH: INSIDE 3/4"x5/4" M. & B.
 OUTSIDE: FLOORBOARDS & BATTENS.
 CEILING HEIGHT: 12'-7"
 LIGHTING: ELECTRIC
 SANITARY FACILITIES: OUTSIDE TOILETS

DIV. SOUTHERN
 SUB. DIV. BIRMINGHAM
 STA. NO. C-635



FLOOR PLAN.
 SCALE 1/16" = 1'-0"

COMBINATION STATION.
 SULLIGENT, ALA.

JULY 1, 1919.