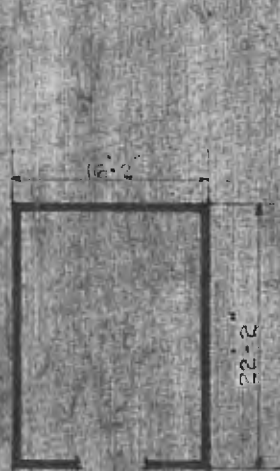


ERECTED 1891.
 TYPE FRAME.
 FOUNDATION RUBBLE STONE.
 WALLS 2x6".
 ROOF TYPE HIP SHINGLE.
 PITCH 1/2.
 HEATING STOVES.

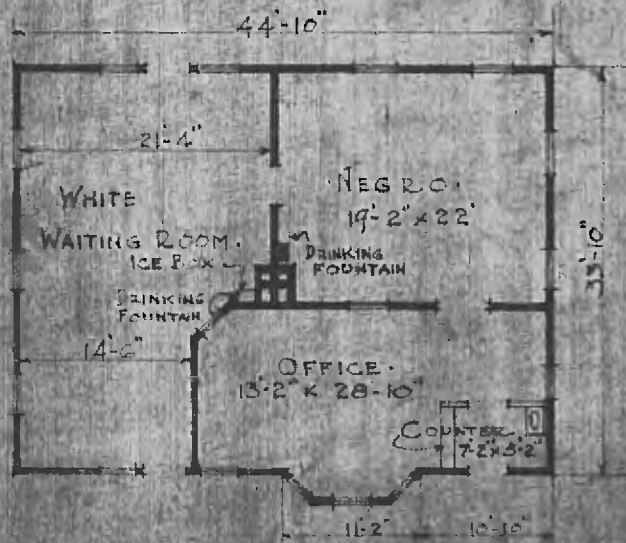
FLOOR 7/8 x 3/4".
 FINISH INSIDE WAINSCOT & PLASTER.
 OUTSIDE LAP SIDING.
 CEILING HEIGHT 12'-0".
 LIGHTING ELECTRIC 2 WIRE 110 AC.
 SANITARY FACILITIES OUTSIDE TOILET.

23

DIV. NORTHERN
 SUB. DIV. ASH GROVE
 STA. NO. C116



FLOOR PLAN OF
 BAGGAGE ROOM
 SCALE 1/8" = 1'-0"



FLOOR PLAN
 OF STATION. SCALE 1/8" = 1'-0"



PLOT PLAN
 SCALE 1/8" = 1'-0"

PASSENGER STATION
 ARCADIA, KANS.

JULY 10 1915.