

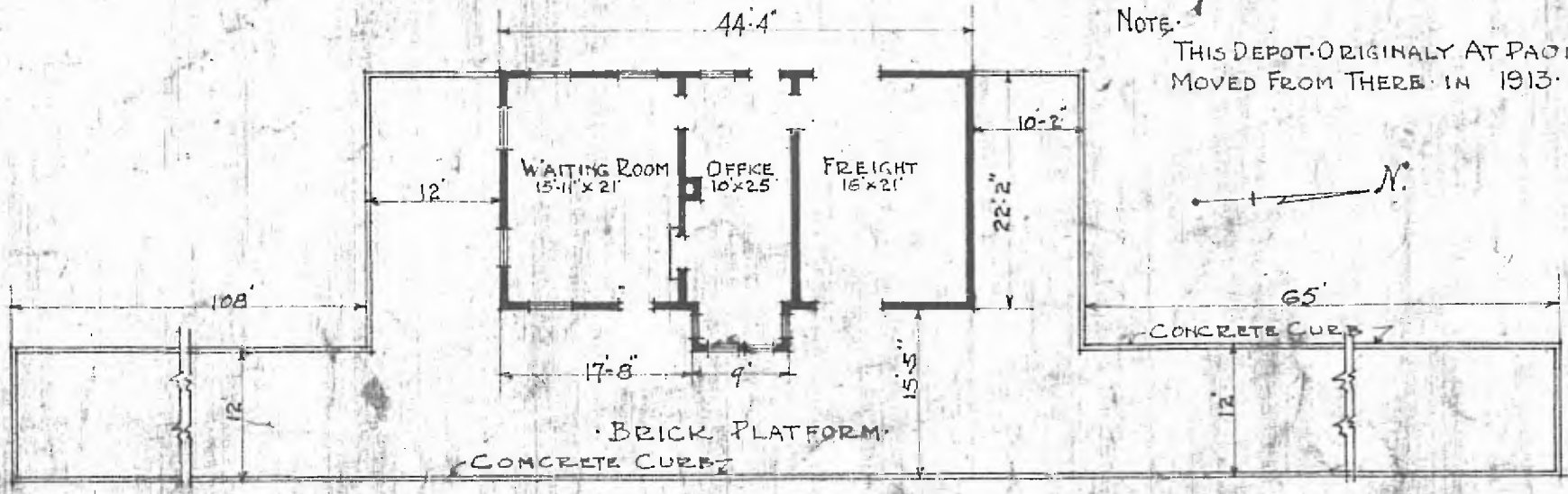
24

DIV. NORTHERN
SUB. DIV. KANSAS CITY
ST. No. C-54

ERECTED 1900.
TYPE FRAME
FOUNDATION CONCRETE
WALLS 2x6"
ROOF TYPE GABLE SHINGLE
PITCH 1/4
HEATING STOVES

FLOOR 7/8 x 3/4"
FINISH INSIDE 3 1/2" W. PINE M & B.
OUTSIDE 4" LAP SIDING
CEILING HEIGHT 11'-3"
LIGHTING LAMPS
SANITARY FACILITIES OUTSIDE TOILET

Note: THIS DEPOT ORIGINALLY AT PAOLA MOVED FROM THERE IN 1913.



FLOOR PLAN
SCALE 1/16" = 1'-0"

COMBINATION STATION AT
FONTANA KANS.

JUNE 12 1915