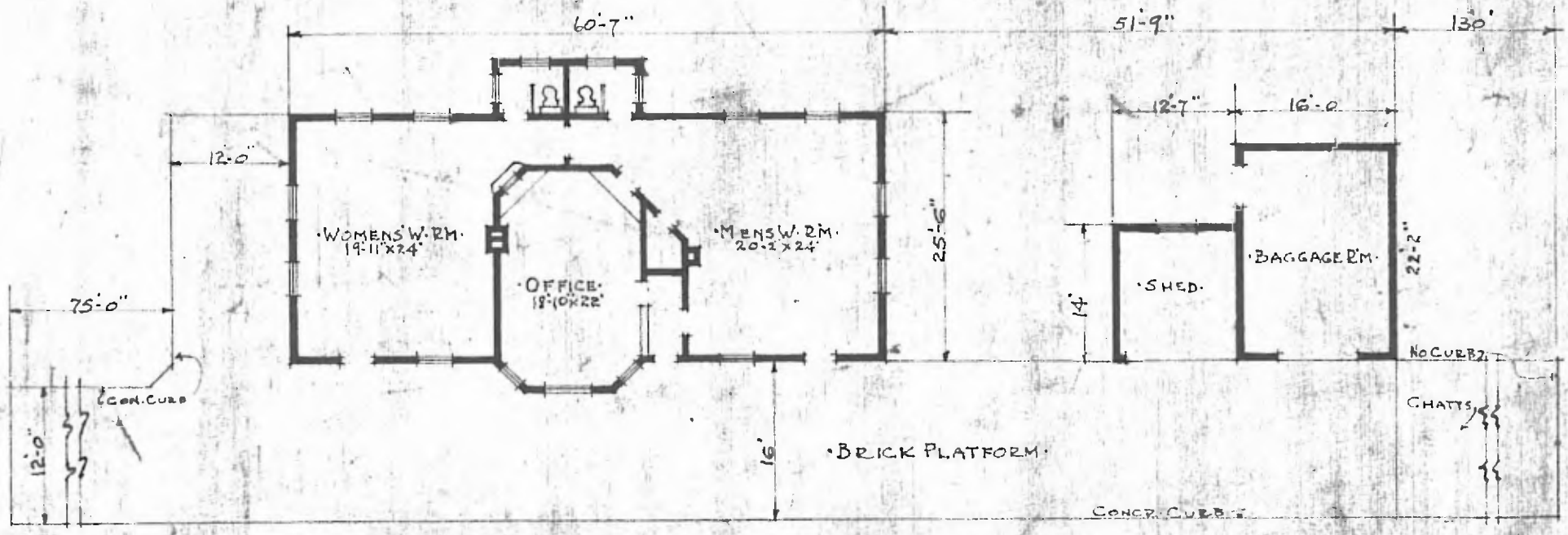


ERECTED 1890.  
 TYPE BRICK.  
 FOUNDATION STONE.  
 WALLS 8" BRICK.  
 ROOF: { TYPE: HIP SLATE.  
 PITCH: APPROX. 1/2".  
 HEATING STOVES.

FLOOR 3/4" x 3/4" Y. PINE.  
 FINISH: { INSIDE.  
 OUTSIDE.  
 BRICK.  
 CEILING HEIGHT 7/4" x 3/4" BD. CEILING.  
 LIGHTING WAITING R.M. 11-5".  
 ELECTRIC 2W.  
 SANITARY FACILITIES INSIDE TOILETS.

DIV. NORTHERN  
 SUB. DIV. AFTON  
 STA. NO. L-124



FLOOR PLAN.  
 SCALE 1/16" = 1'-0"

PASSENGER STATION.  
 GIRARD, KAN.

MAR. 6 - 1917.