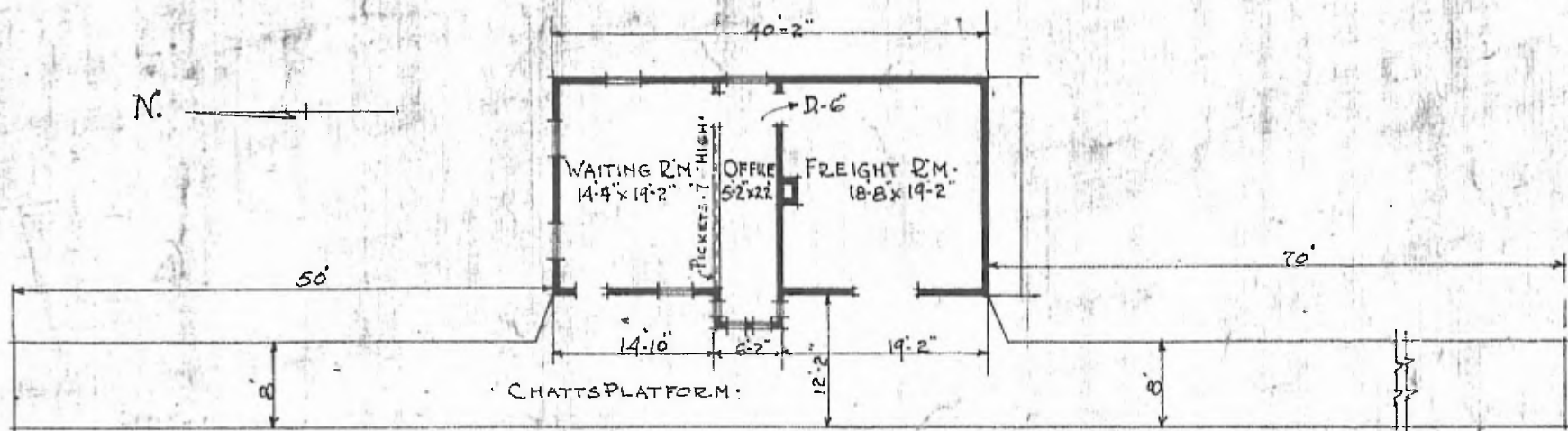


18

DIV. NORTHERN
SUB. DIV. KANSAS CITY
STA. No. C-92

ERECTED.	1890.	FLOOR.	$\frac{3}{8}$ " x $\frac{3}{4}$ " Y. PINE.
TYPE.	FRAME.	FINISH {	INSIDE.
FOUNDATION.	PILE HEADS.	}	OUTSIDE.
WALLS.	2" x 6" STUDS.	CEILING HEIGHT.	11'-4" - FT. 12'-3"
ROOF	{ TYPE: GABLE. SHINGLES.	LIGHTING.	LAMPS.
HEATING.	{ PITCH: $\frac{1}{3}$.	SANITARY FACILITIES: OUTSIDE TOILETS.	
	STOVES.		



FLOOR PLAN.
SCALE: $\frac{1}{16}$ " = 1'-0"

AUG. 26. 1915.

COMBINATION STATION.
HAMMOND. KANS.