

ERECTED. 1903.  
TYPE. FRAME.

FLOOR.  $\frac{7}{8} \times 3\frac{1}{4}$ "  
INSIDE.  $3\frac{1}{4}$ " M.E.B.

FOUNDATION. PILE & CONC. PIERS.  
WALLS. 2" x 6"

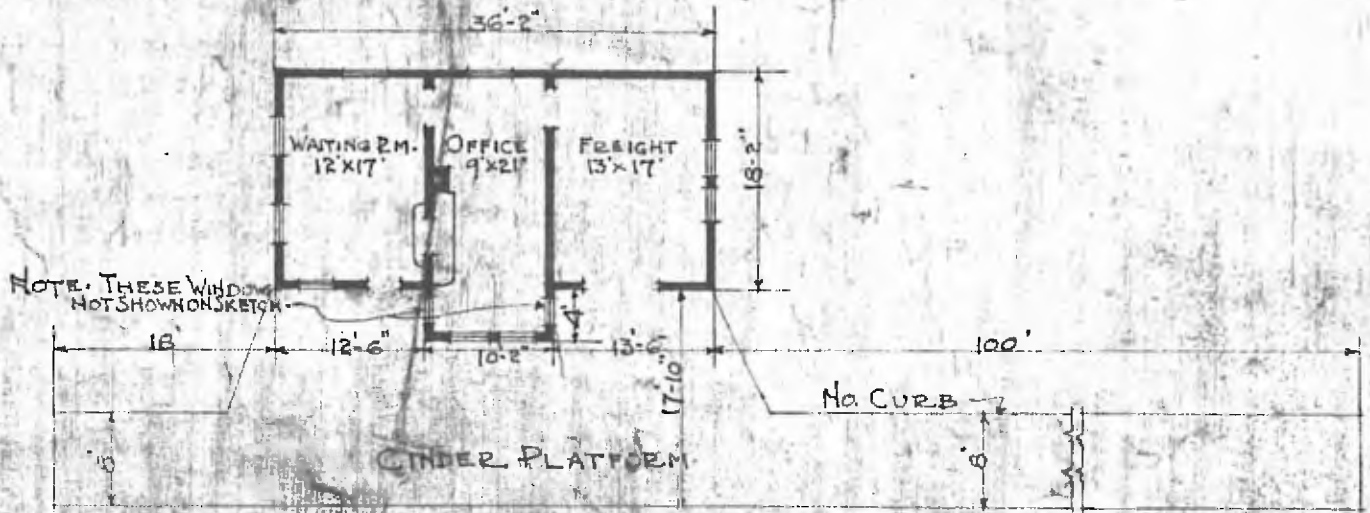
FINISH. OUTSIDE. 1x12 BOARD & BATTIS.

ROOF TYPE. GABLE. SHINGLES.  
PITCH.  $\frac{1}{4}$ .

CEILING HEIGHT 13-0.  
LIGHTING. LAMPS.

HEATING. STOVES.

SANITARY FACILITIES. OUTSIDE TOILETS.



FLOOR PLAN.  
SCALE  $\frac{1}{16} = 1-0$

JUL 10 1915.

COMBINATION STATION.  
HENSON, KANS.