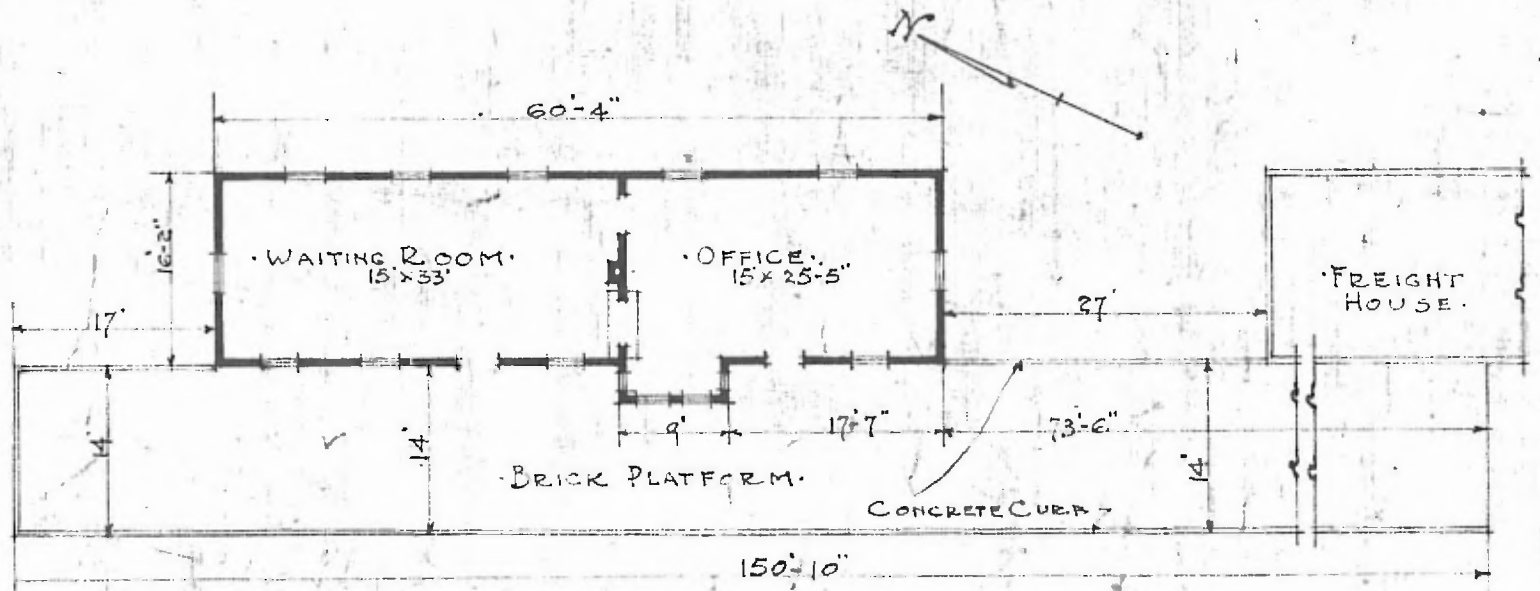


ERECTED. 1906.
 TYPE. FRAME.
 FOUNDATION. CONCRETE.
 WALLS. 2"x6" STUDS.
 ROOF { TYPE. HIP SHINGLES.
 PITCH. 1/4.
 HEATING. STOVES.

FLOOR 2"x3 1/2" Y. PINE.
 FINISH. { INSIDE. 2"x3 1/2" M.S.B. Y. PINE.
 OUTSIDE. 2"x3 1/2" DROP SIDING.
 CEILING HEIGHT. 11-5.
 LIGHTING. ELECTRIC. 2 WIRE 110 A.C.
 SANITARY FACILITIES. OUTSIDE TOILET.

DIV. NORTHERN
 SUB. DIV. PARSONS
 STA No. M-123



FLOOR PLAN.
 SCALE. 1/16" = 1'-0"

PASSENGER STATION.
 MULBERRY KANS.

JULY 1-1915.