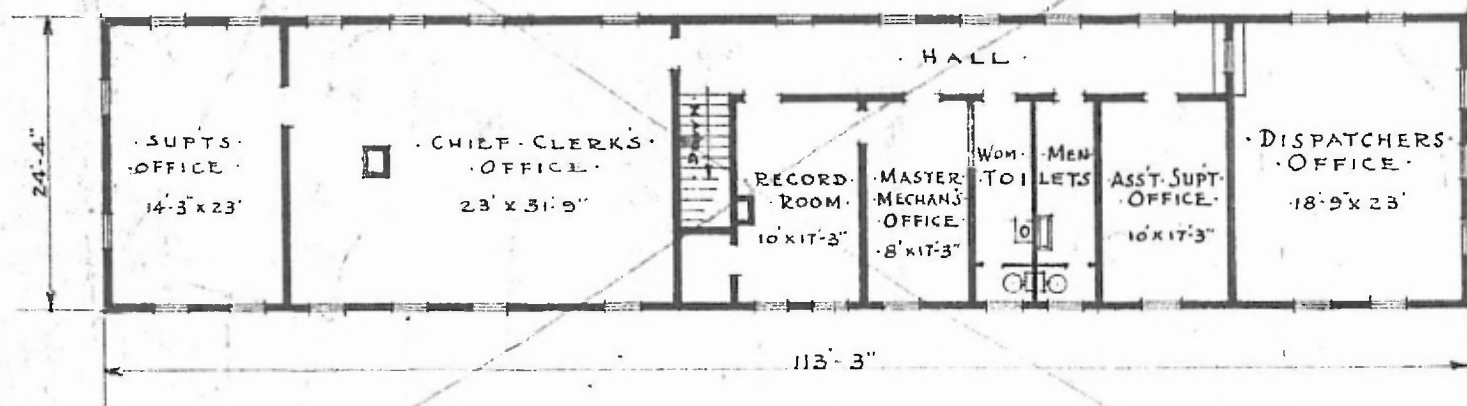


ERECTED 1899
 TYPE FRAME
 FOUNDATION PILE HEADS
 WALLS 2" x 6"
 ROOF { TYPE - GABLE - SHINGLES
 PITCH - 1/3
 HEATING GAS STOVES.

FLOOR 7/8" x 3 1/4" Y.P.
 FINISH { INSIDE
 OUTSIDE 7/8" M. & B. CEILING
 1" x 12" BOARDS & BATTS.
 CEILING HEIGHT 10'-0"
 LIGHTING GAS.
 SANITARY FACILITIES - INSIDE TOILETS.



SECOND FLOOR PLAN

SCALE: 1/16" = 1'-0"

DESTROYED BY FIRE 9-24-18.

PASSENGER STATION AT
 NEODESHA, KAN.