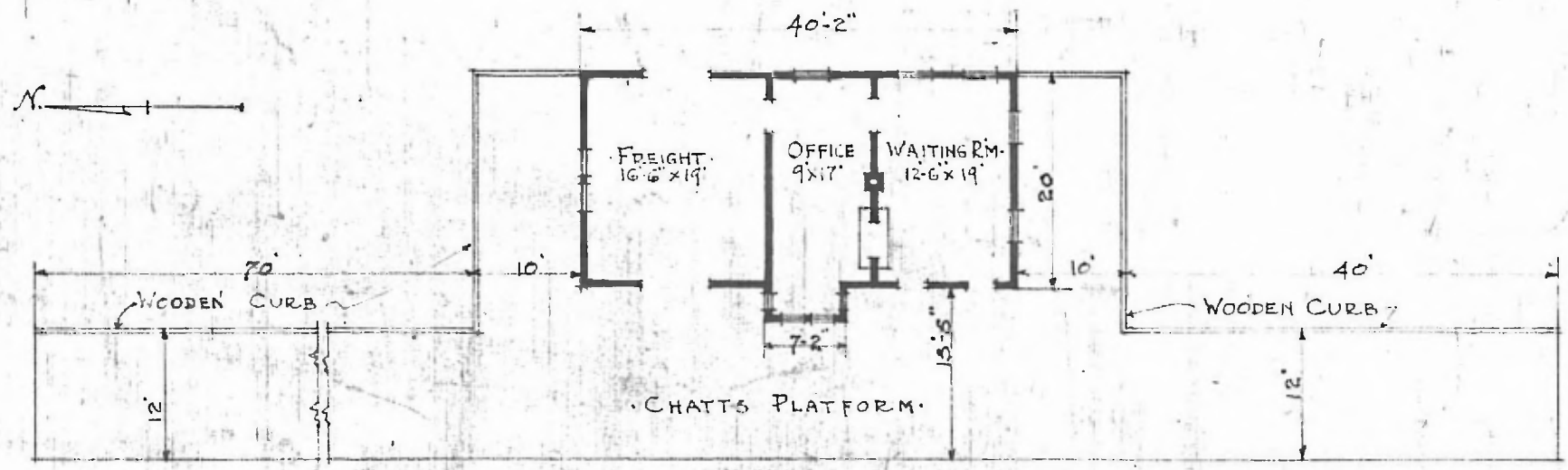


ERECTED. 1888.  
 TYPE. FRAME.  
 FOUNDATION. PILE HEADS.  
 WALLS. 2x6.  
 ROOF TYPE. GABLE. SHINGLES.  
 PITCH. 1/3.  
 HEATING. STOVES.

FLOOR.  
 FINISH { INSIDE 7/8 x 5 1/4" M&B. CEILING.  
 OUTSIDE 1" x 12" BOARD & BATTIS.  
 CEILING HEIGHT. 10'-5"  
 LIGHTING. LAMPS.  
 SANITARY FACILITIES. OUTSIDE TOILET.



FLOOR PLAN.  
 SCALE 1/16" = 1'-0".

COMBINATION STATION.  
 OCHELTREE, KANS.

JUNE. 24. 1915.