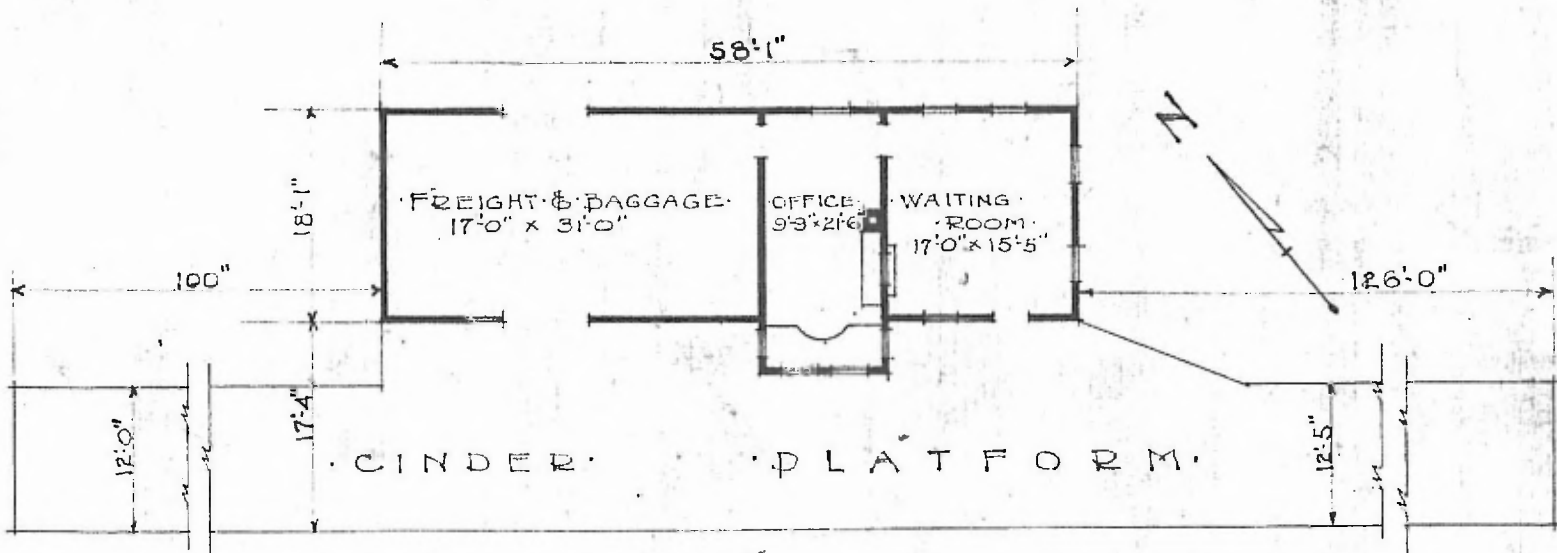


· ERECTED: 1907  
 · TYPE: FRAME  
 · FOUNDATION: PILE HEADS  
 · WALLS: 2"x6"  
 · ROOF: { TYPE: GABLE, SHINGLES.  
           PITCH: 8/9  
 · HEATING: STOVES

· FLOOR: 2/4 x 5 1/2" Y.P.  
           3/4 x 3 1/2" N. & B.  
 · FINISH: { INSIDE  
               OUTSIDE  
 · CEILING HEIGHT: 13'0"  
 · LIGHTING: OIL LAMPS  
 · SANITARY FACILITIES: OUTSIDE TOILET

DIV. NORTHERN  
 SUB. DIV. WICHITA  
 STA. NO. F-447



· FLOOR PLAN ·  
 SCALE 1/16" = 1'-0"

APRIL 5, 1917.

· COMBINATION · STATION ·  
 · PIEDMONT · KANS.