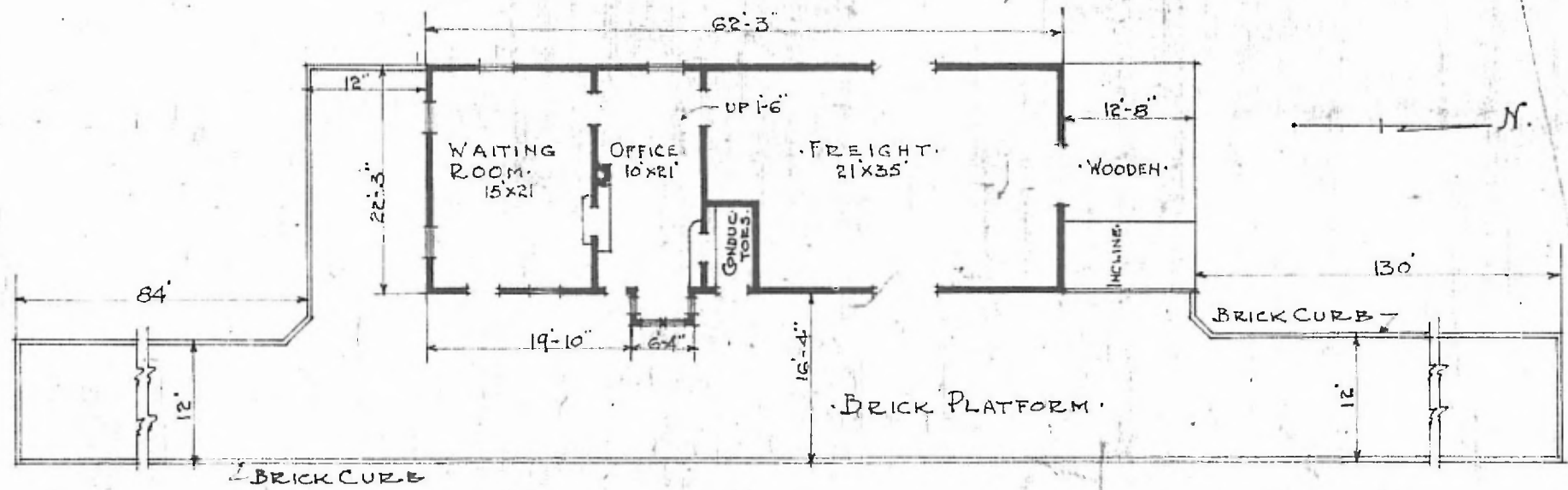


St. C 2  
Sub Kansas  
Div Northern

ERECTED. 1887.  
 TYPE. FRAME.  
 FOUNDATION. STONE.  
 WALLS. 2x6 STUDS.  
 ROOF { TYPE. GABLE SHINGLES.  
 PITCH. 4.  
 HEATING. STOVES.

FLOOR. FINISH { INSIDE.  
 OUTSIDE.  
 CEILING HEIGHT. WAITING RM. 12'-0". FREIGHT RM. 10'-6".  
 LIGHTING. LAMPS.  
 SANITARY FACILITIES. OUTSIDE TOILETS.

2/8 x 3 1/2".  
 2/8 x 3 1/4".  
 1 x 12" BOARD & BATT.  
 WAITING RM. 12'-0". FREIGHT RM. 10'-6".  
 LAMPS.



FLOOR PLAN.  
 SCALE 1/16" = 1'-0"

COMBINATION STATION.  
 PRESCOTT, KANS.

JUNE 11, 1915.