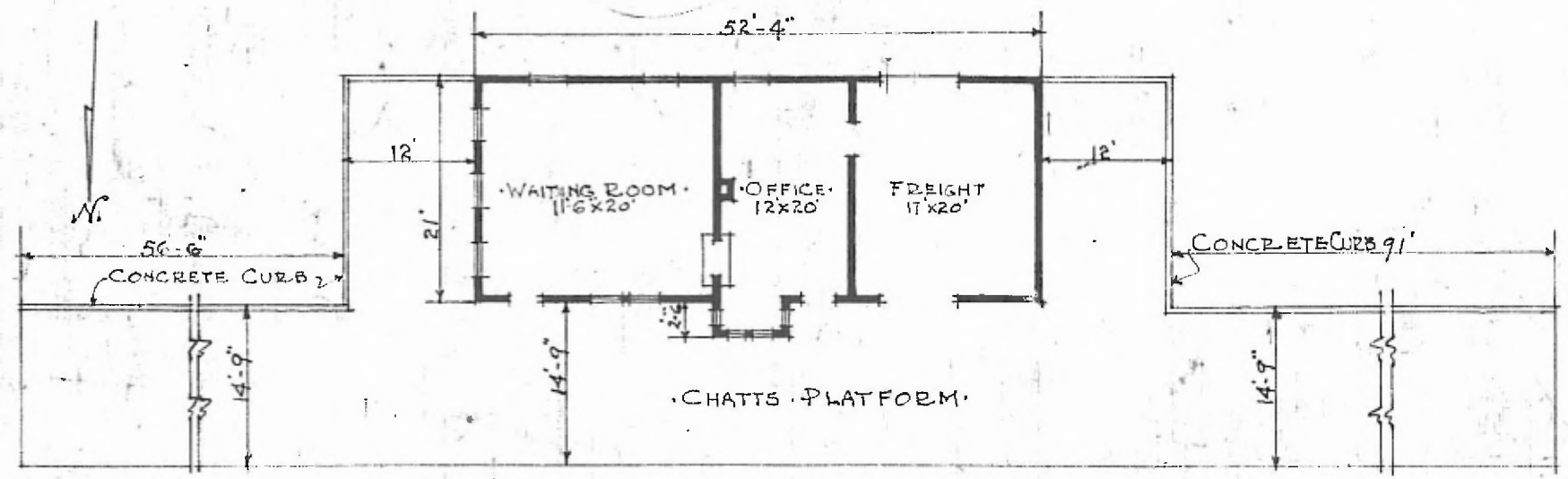


ERECTED. 1885.
TYPE. FRAME.
FOUNDATION. STONE.
WALLS. 2"x6"
ROOF TYPE. GABLE SHINGLE.
PITCH 1/2
HEATING. STOVES.

FLOOR. 7/8" x 5 1/4"
FINISH } INSIDE. 7/8" x 5 1/4" M.E.B. CEIL.
OUTSIDE. 7/8" x 5 1/4" DROPSIDING.
CEILING HEIGHT. 17'-4 1/2"
LIGHTING. ELECTRIC. 2 WIRE 110 A.C.
SANITARY FACILITIES. OUTSIDE TOILETS.

STR. No. C-4



FLOOR PLAN.
SCALE 1/16" = 1'-0"

COMBINATION STATION AT
ROSEDALE, KANS.

JUNE 21, 1915.