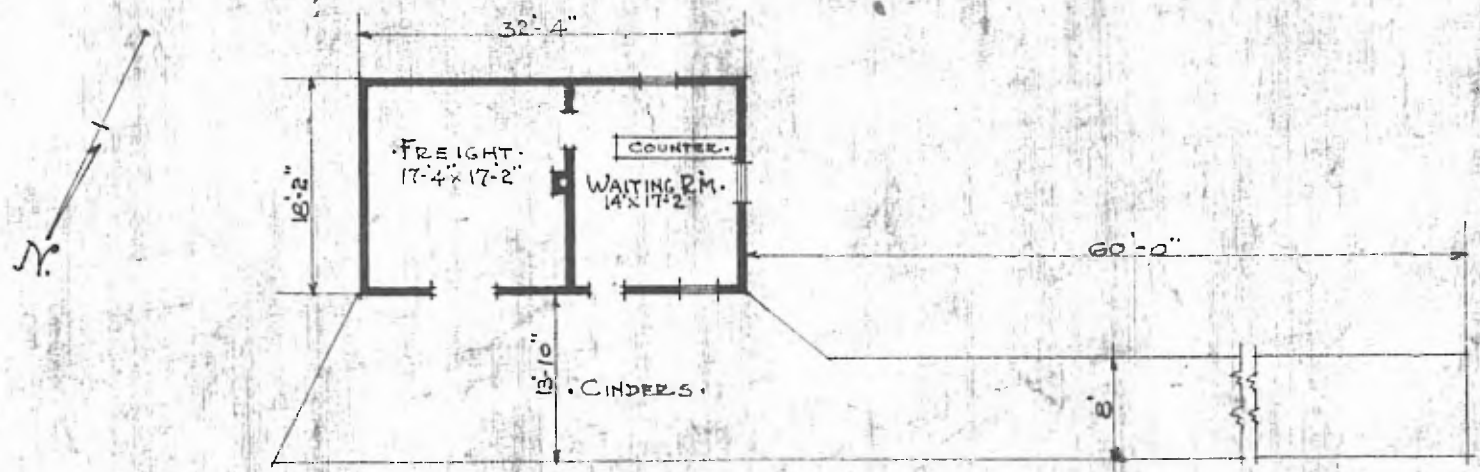


ERECTED. 1853.
 TYPE. FRAME.
 FOUNDATION. PILE HEADS.
 WALLS. 2x4" STUDS.
 ROOF. { TYPE. GABLE SHINGLE.
 PITCH. 1/4.
 HEATING. STOVES.

FLOOR. 7/8 x 3/4"
 FINISH. { INSIDE. 3/8 x 5/4" M.E.B.W. PINE.
 OUTSIDE. 1 x 12" BOARD & BATTIS.
 CEILING HEIGHT. 10'-3".
 LIGHTING. LAMPS.
 SANITARY FACILITIES. OUTSIDE TOILETS.



FLOOR PLAN.
 SCALE. 1/16" = 1'-0"

COMBINATION STATION.
 STRAUSS. KANS.

JULY 2, 1915.