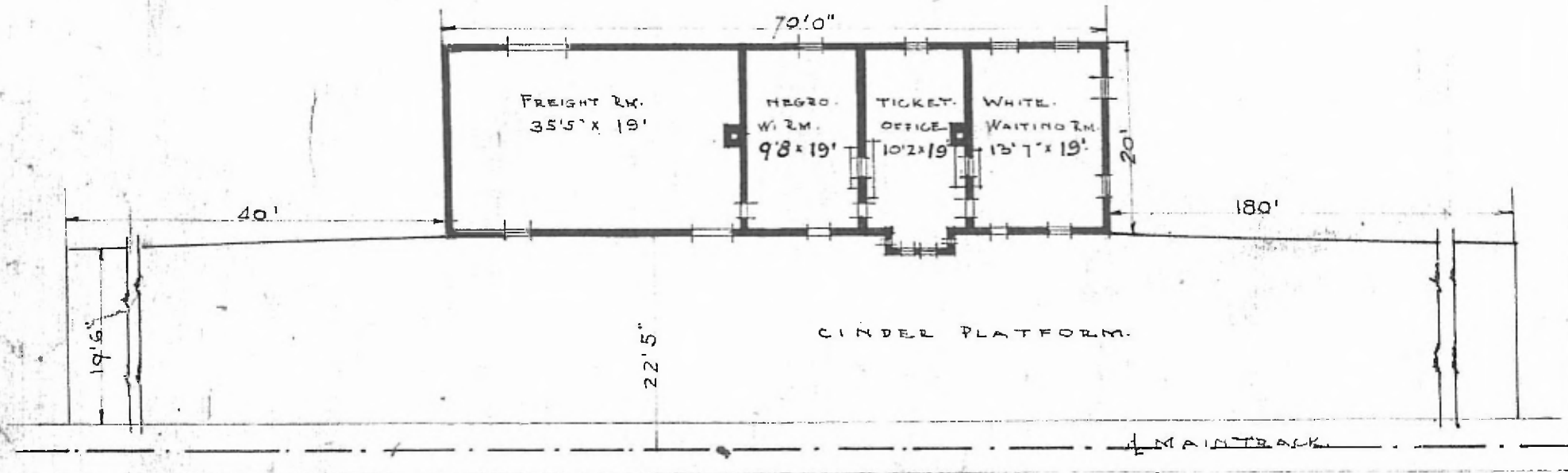


60

DIV. SOUTHERN
SUB. DIV. TOPELO
STA. NO. C-577

ERECTED.
TYPE. FRAME.
FOUNDATION. PILE HEADS.
WALLS. 2X6"
ROOF { TYPE. SHINGLE GABLE.
PITCH. 1/3
HEATING. STOVES.

FLOOR 7/8 x 3/4.
FINISH { INSIDE 7/8 x 3/4 M.L.B.
OUTSIDE BOXING & BATTENS.
CEILING HEIGHTS. W.RM. 12'1" - FRM. 12'1"
LIGHTING. LAMPS.
SANITARY FACILITIES. OUTSIDE TOILETS.



FLOOR PLAN.
SCALE 1/16" = 1'0"

COMBINATION STATION
SHERMAN MISS.



JANUARY 11-1918.