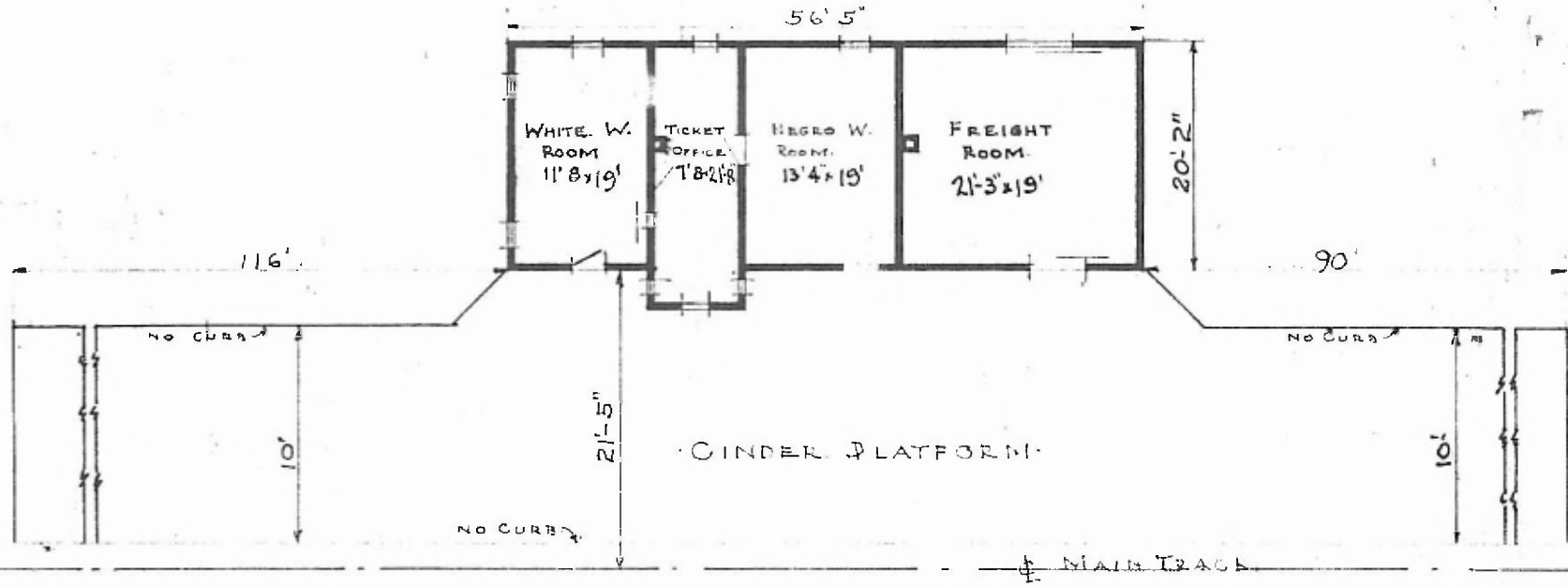


ERECTED - 1885
 TYPE - FRAME
 FOUNDATION - BLOCKS
 WALLS - 2 x 6
 ROOF { TYPE - GABLE - SHINGLE
 PITCH - $\frac{1}{3}$
 HEATING - STOVES

FLOOR -
 FINISH { INSIDE
 OUTSIDE
 CEILING HEIGHTS - 11' 8"
 LIGHTING - LAMPS
 SANITARY FACILITIES - OUTSIDE TOILETS

DIV. SOUTHERN
 SUB. DIV. TUPELO
 MEB. STA. NO. C-516
 BOXING & BATTENS.



FLOOR PLAN
 SCALE $\frac{1}{16} = 10'$

COMBINATION STATION AT
 VICTORIA MISS.

MAY. 28. 1917.