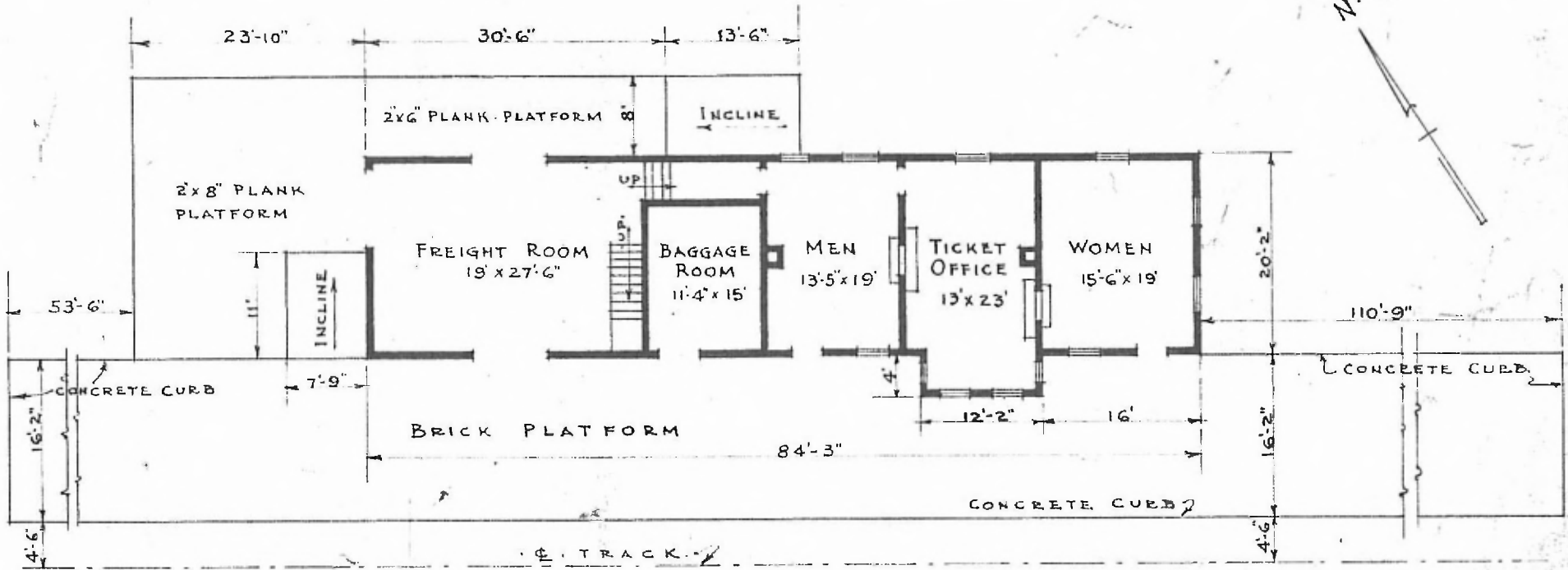


ERECTED  
 TYPE FRAME  
 FOUNDATION PILE HEADS  
 WALLS 2" x 6"  
 ROOF { TYPE GABLE-SHINGLES  
 PITCH 1/3  
 HEATING STOVES

FLOOR 3/4" x 3/4" Y. PINE  
 FINISH { INSIDE  
 OUTSIDE 3/4" x 3/4" BD. CEILING - WAINSCOT-3'-8"  
 BOARDS & BATTENS - & - 1" x 6" - DROP SIDING  
 CEILING HEIGHT 12'-11" - FREIGHT R'M-12'-9" - BAGGAGE-9'-4"  
 LIGHTING ELECTRIC  
 SANITARY-FACILITIES OUTSIDE TOILETS.

EASTERN DIV.  
 CLINTON SUB  
 STA No. 28



· FLOOR PLAN ·  
 · SCALE: 1/16" = 1'-0" ·

· PASSENGER STATION AT ·  
 · BELTON · MO ·