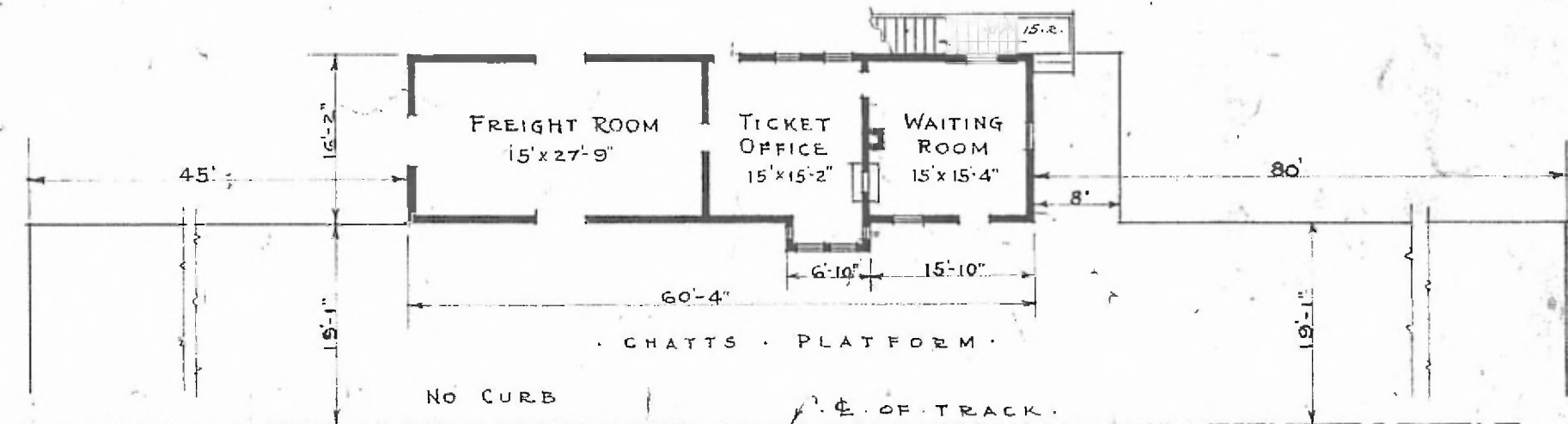


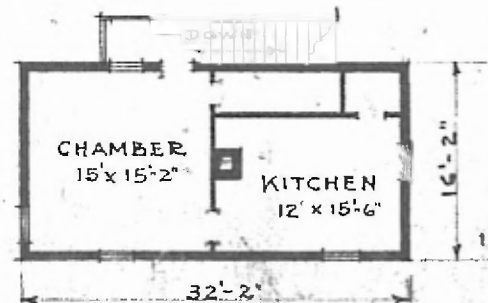
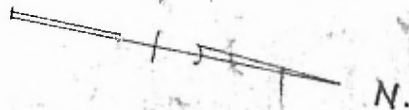
ERECTED 1884.  
 TYPE FRAME  
 FOUNDATION PILE HEADS  
 WALLS 2"x6"  
 ROOF TYPE GABLE-SHINGLES.  
 PITCH 1/3  
 HEATING STOVES.

FLOOR 3/4"x3 1/4" Y. PINE  
 FINISH { INSIDE 3/4"x3 1/4" BD. CEILING  
 { OUTSIDE BOARDS & BATTENS.  
 CEILING HEIGHT W.R.M. 8'-5" FET.R.M. 8'-2" 2ND FL. 7'-10"  
 LIGHTING OIL LAMPS  
 SANITARY FACILITIES OUTSIDE TOILETS.

DIV. EASTERN  
 S.W. DIV. QUINCY  
 SIP. No. D-70  
 83



1ST FLOOR PLAN  
 SCALE: 1/16" = 1'-0"



2ND FLOOR PLAN

PASSENGER STATION AT  
 BLAIRSTOWN MO.