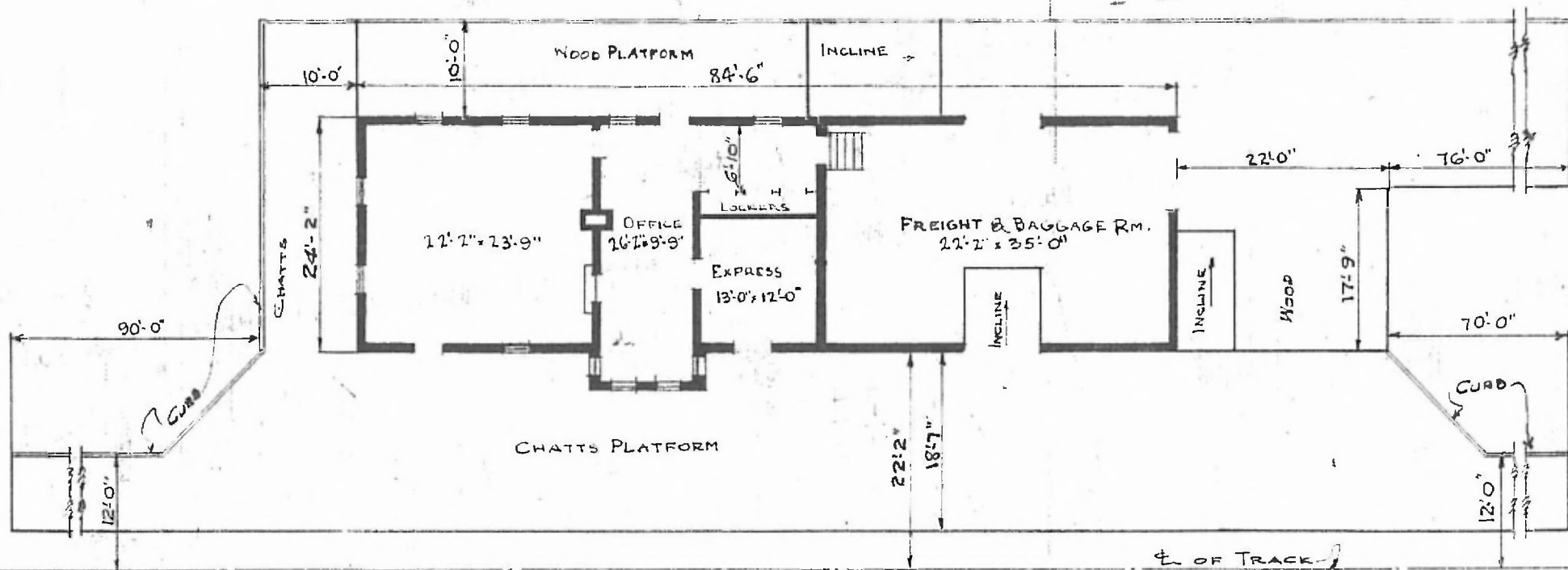


ERECTED  
 TYPE BRICK  
 FOUNDATION BRICK  
 WALLS 12"  
 ROOF { TYPE GABLE-SHINGLE  
 PITCH 1/4  
 HEATING STOVES

FLOOR 7' 1" / 8' 3/4" Y.P.  
 FINISH { INSIDE  
 OUTSIDE  
 CEILING HEIGHT 13'-10" WAIT. RM. - 11'-4" FR'T. RM.  
 LIGHTING ELECTRIC  
 SANITARY FACILITIES OUTSIDE TOILETS

RIVER DIV.  
 SUB. DIV. HORSE  
 STA. No TD 180

81



FLOOR PLAN  
 SCALE: 1/16" = 1'-0"



COMBINATION STATION  
 BLOOMFIELD, MO.

SEP. 16, 1919