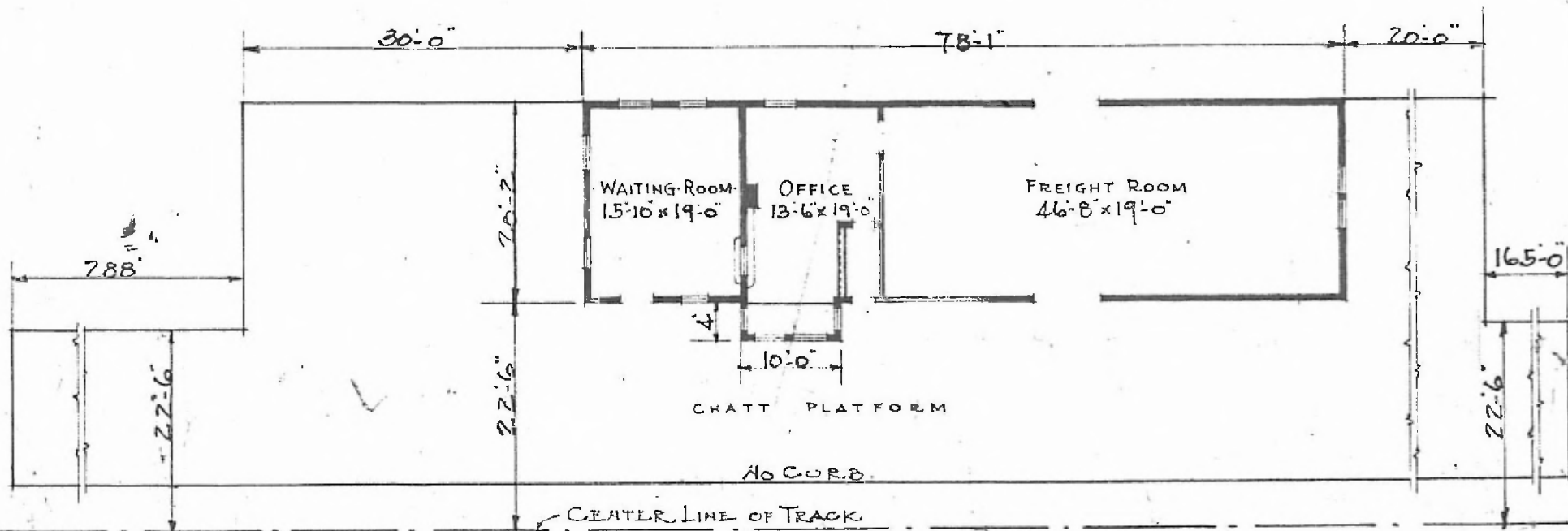


ERECTED 1891.
 TYPE FRAME
 FOUNDATION PILE HEADS
 WALLS 2"x6"
 ROOF { TYPE - GABLE · SHINGLES
 { PITCH - 1/4
 HEATING STOVES

FLOOR 7/8" x 3 1/4"
 FINISH { INSIDE
 { OUTSIDE 7/8" x 3 1/4" M. & B.
 CEILING HEIGHT 11' 3"
 LIGHTING LAMPS
 SANITARY FACILITIES OUTSIDE TOILETS

EASTERN DIV.
 ROLLA SUB
 STA. NO. 74

29



FLOOR PLAN
 SCALE: 1/16" = 1'-0"

PASSENGER STATION AT
 BOURBON MO.

JAN. 25. 1917.