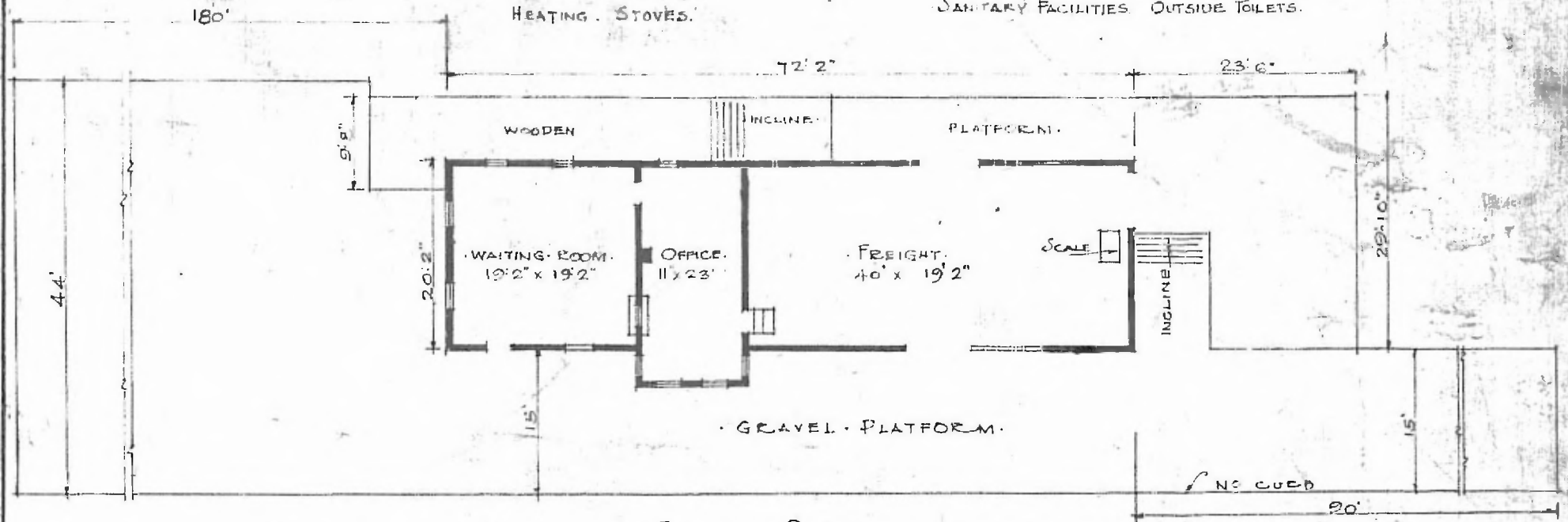


ERECTED. 1898.  
 TYPE. FRAME.  
 FOUNDATION. PILE HEADS.  
 WALLS. 2"x6"  
 ROOF { TYPE. GABLE. SHIPLEY.  
 PITCH. 1/3  
 HEATING. STOVES.

FLOOR. 3/4" x 3 1/4" Y. SHIPLEY  
 FINISH { INSIDE. 3/4" x 3 1/4" BD. CEILING.  
 OUTSIDE BOARD & BUTTS.  
 CEILING HEIGHT. 11'-10" FEET RM. 10'-9"  
 LIGHTING. LAMPS.  
 SANITARY FACILITIES. OUTSIDE TOILETS.

1.



FLOOR PLAN.  
 SCALE 1/16" = 1'-0"

DIV: CENTRAL  
 STA. EXETER, MO  
 STA. NO. 301 CALL EX  
 SUB. DIV. FT. SMITH

COMBINATION STATION AT  
 EXETER MO.



JULY. 24. 1915.