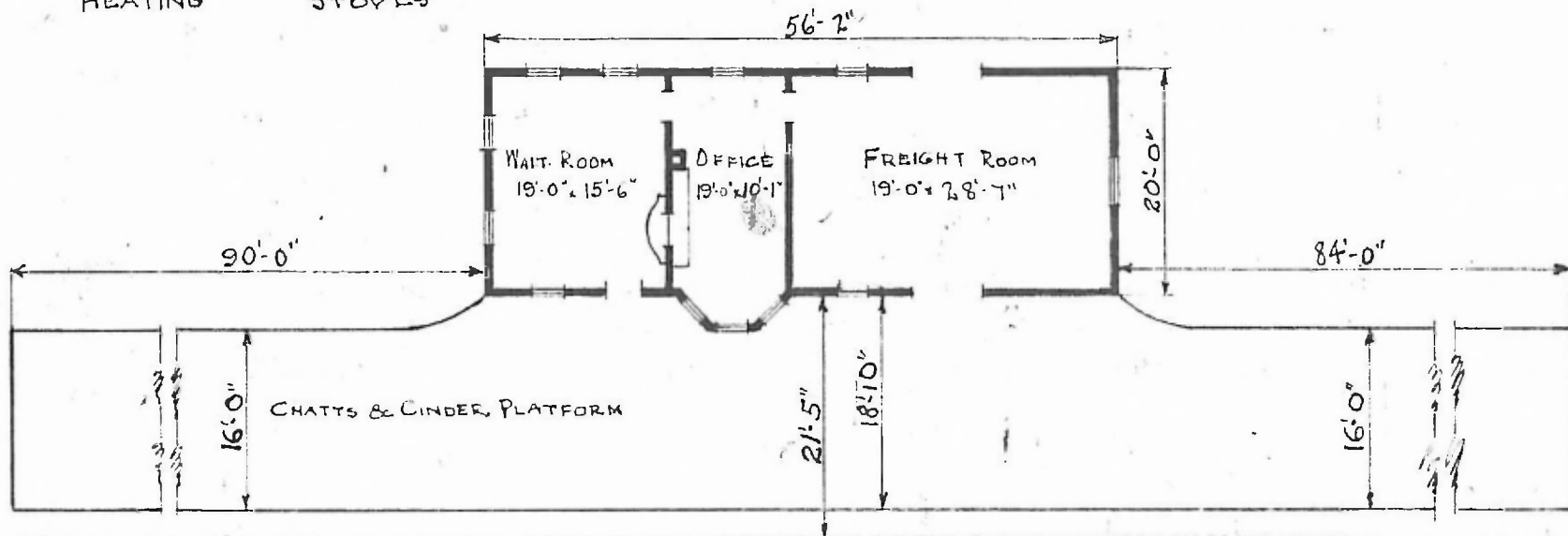


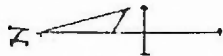
ERECTED 1914  
 TYPE NO. 1  
 FOUNDATION CONCRETE  
 WALLS 2x6  
 ROOF (TYPE) HIP SHINGLES  
 (PITCH) 10" RISE  
 HEATING STOVES

FLOOR  $\frac{1}{8}$ " x  $\frac{3}{4}$ " MAPLE  
 FINISH { INSIDE  $\frac{7}{8}$ " x  $3\frac{1}{2}$ " M. & V. JOINT  
 OUTSIDE 4" LAP SIDING -  $\frac{3}{4}$ " x  $5\frac{1}{2}$ " DROP SIDING  
 CEILING HEIGHT 11'-6"  
 LIGHTING OIL  
 SANITARY FACILITIES OUTSIDE TOILETS

RIVER DIV.  
 LEADVILLE SUB  
 STA. NO. TE 213  
 (95)



FLOOR PLAN  
 SCALE:  $\frac{1}{16}$ " = 1'-0"



COMBINATION STATION  
 GIBSON, MO.

Oct. 3, 1919.