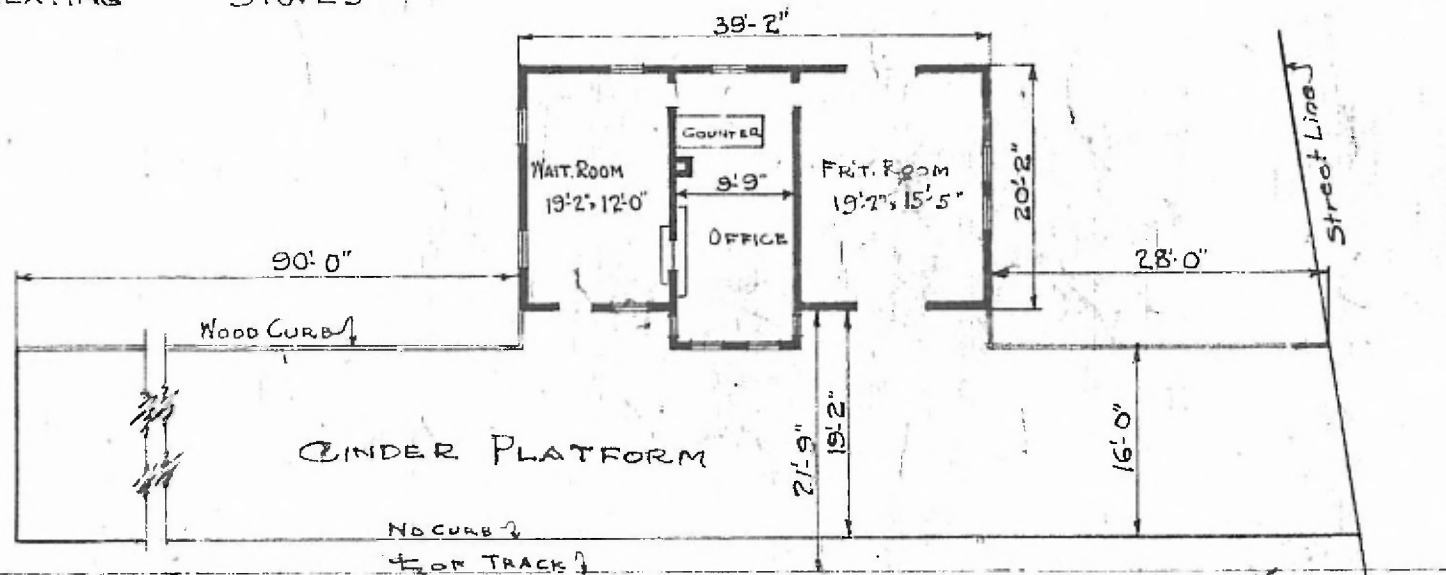


ERECTED 1896
 TYPE FRAME
 FOUNDATION PILE HEADS
 WALLS 2" x 6"
 ROOF { TYPE GABLE SHINGLES
 PITCH 5/12
 HEATING STOVES

FLOOR 7"
 8" x 3 1/4"
 FINISH { INSIDE 7"
 8" x 3 1/4" M. & B.
 OUTSIDE
 CEILING HEIGHT 12' 3"
 LIGHTING ELECTRIC
 SANITARY FACILITIES OUTSIDE TOILETS
 BOX & BATT. 7/8" x 5 1/4" DROP SIDING

RIVER DIV.
 LEACHVILLE SUB
 STA. NO. TA 206

93



FLOOR PLAN
 SCALE: 1/16" = 1'-0"



COMBINATION STATION
 GIDEON, MO.

Oct 29 1919.