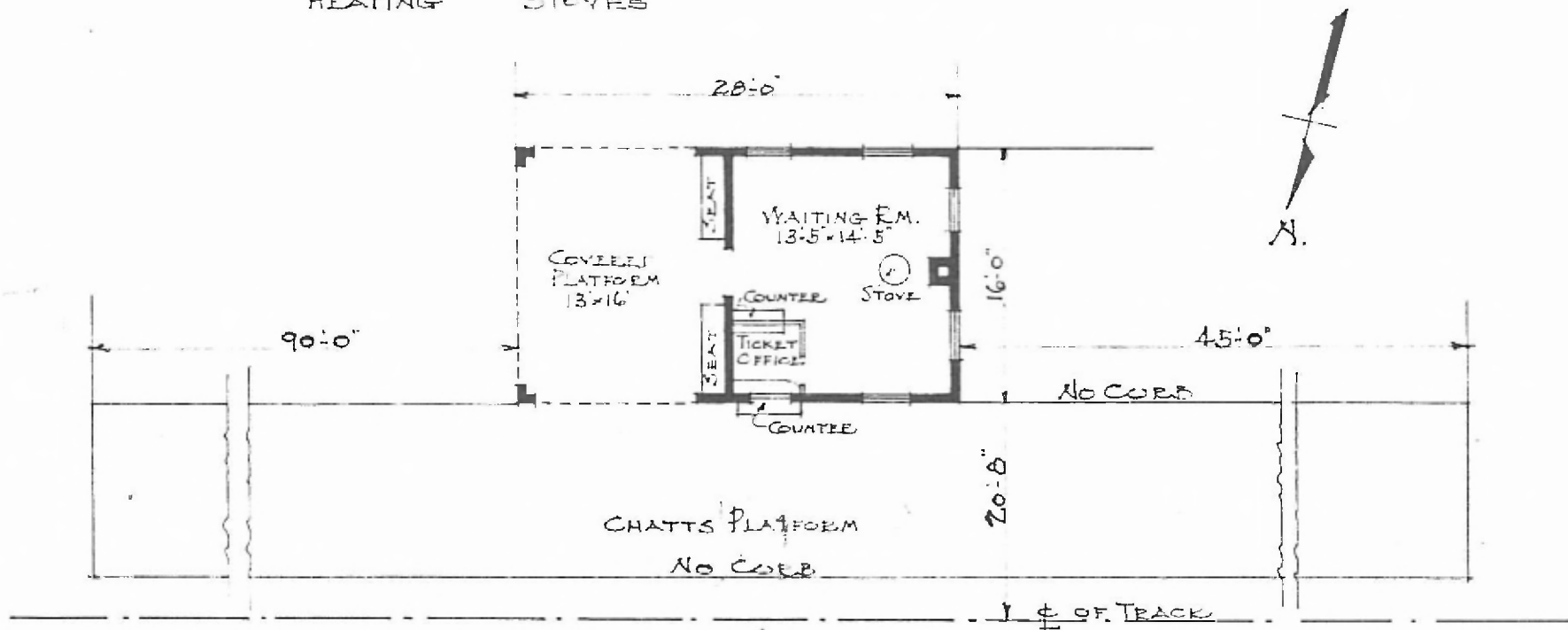


ERECTED 1909
 TYPE FRAME, S
 FOUNDATION CONCRETE
 WALLS 2"x6" & 10" CON.
 ROOF { TYPE HIP, TILE
 PITCH 1/3
 HEATING STOVES

FLOOR, GRANITOID
 FINISH { INSIDE
 OUTSIDE
 CEILING & HEIGHT 10'-0"
 LIGHTING ELECTRIC
 SANITARY FACILITIES. OUTSIDE TOILET.

EASTERN DIV
 ROLLA 5013
 STA. No. 11



FLOOR PLAN
 SCALE 3/32" = 1'-0"

PASSENGER STATION
 GLENDALE, MO.

JAN. 27. 1917