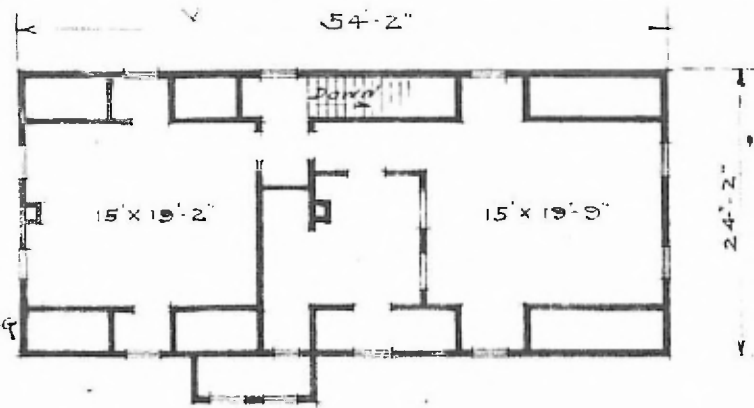


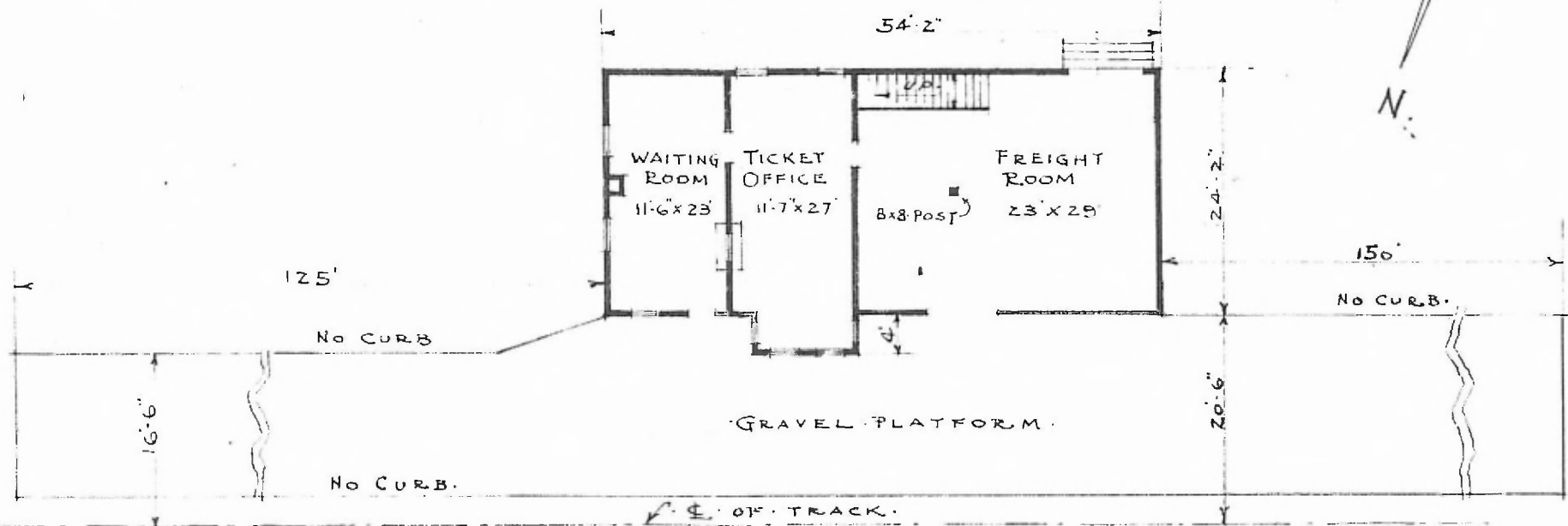
ERECTED 1870
 TYPE FRAME
 FOUNDATION PILE HEADS
 WALLS 2"x6"
 ROOF { TYPE - GABLE - WOOD SHINGLES
 PITCH - 10 x 12
 HEATING STOVES
 FLOOR 3/4"x3/4" Y.P.
 FINISH { INSIDE 3/4"x3/4" BD. CEILING.
 OUTSIDE BOARDS & BATTS - 1x6 DR. SDG
 CEILING HEIGHT 10'-4" - 2ND FLOOR - 8'-0"
 LIGHTING
 SANITARY FACILITIES - OUTSIDE TOILETS

SOUTHWESTERN DIV
 CHEROKEE SUB
 STATION G302

33



SECOND FLOOR PLAN



FIRST FLOOR PLAN

SCALE: 1/16" = 1'-0"

PASSENGER STATION AT GRANBY MO

AUG. 15. 1916