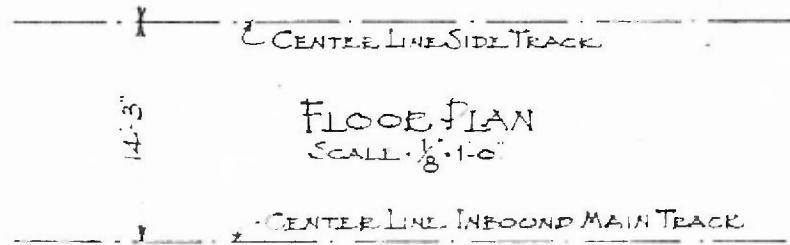
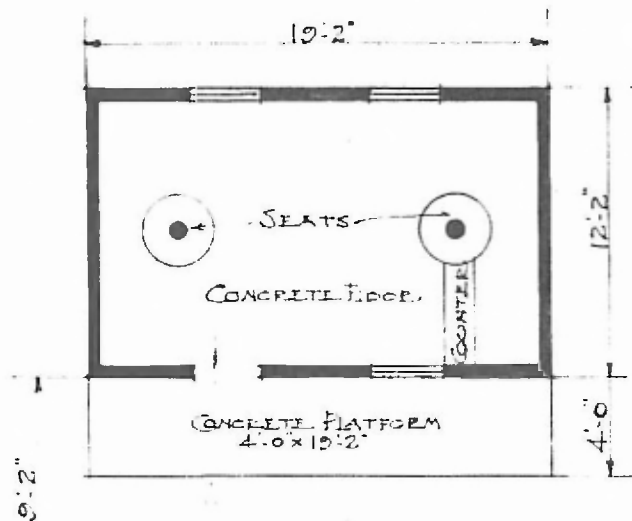


ERECTED 1905
 TYPE FRAME
 FOUNDATION CONCRETE
 WALLS 2x4
 ROOF { TYPE GABLE SHINGLE.
 PITCH 1/4
 HEATING STOVES

FLOOR CONCRETE.
 FINISH { INSIDE 7/8x3 1/4 CEILING
 OUTSIDE DECK SIDING.
 CEILING HEIGHT 8'-7"
 LIGHTING NONE
 SANITARY FACILITIES. NONE.

EASTERN DIV.
 ROLL A. SUB
 STA. NO. 7

5



FLOOR PLAN
 SCALE 1/8" = 1'-0"

PASSENGER STATION
 GRATIOT, MO.

AUG. 9. 1915.