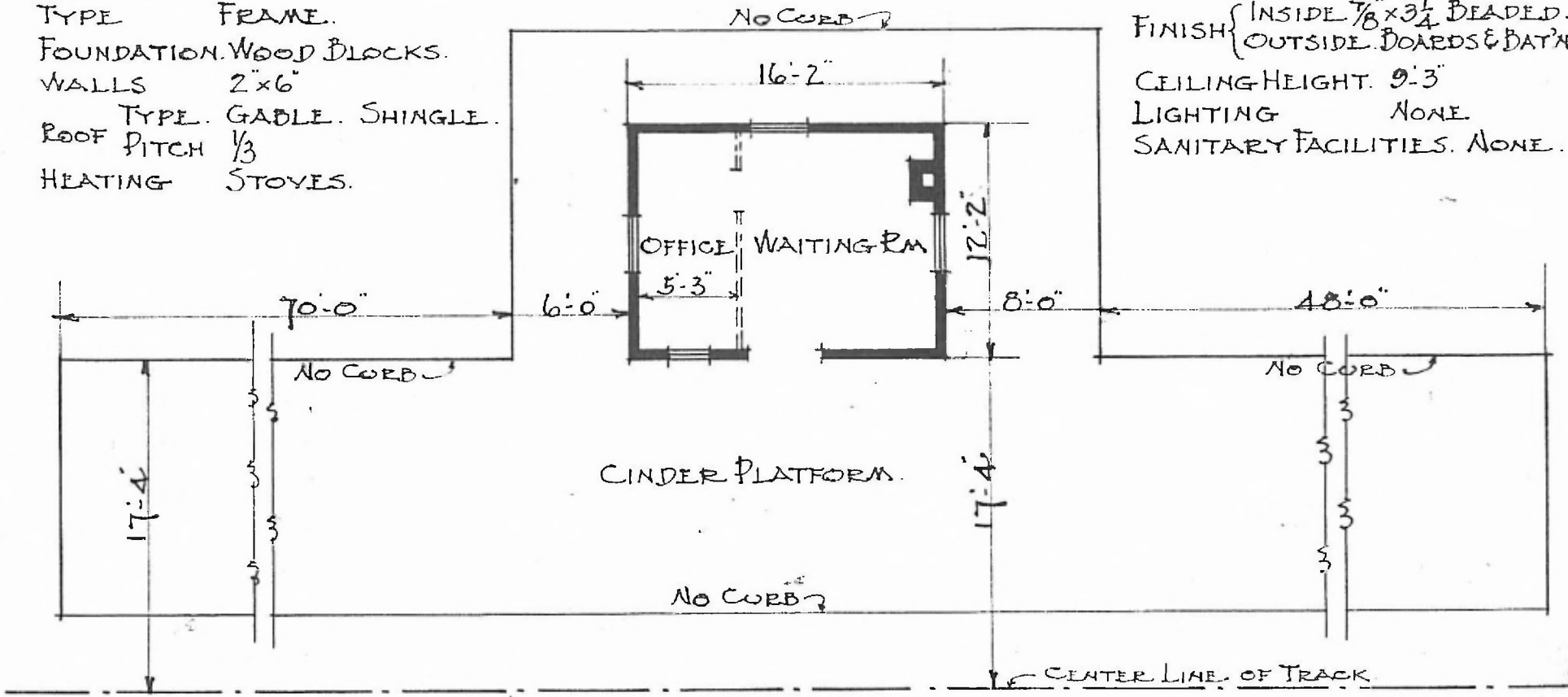


EASTERN DIV.
LEBANON SUB
STA. NO. 138

105

ERECTED
TYPE FRAME.
FOUNDATION. WOOD BLOCKS.
WALLS 2"x6"
ROOF TYPE. GABLE. SHINGLE.
ROOF PITCH 1/3
HEATING STOVES.

FLOOR 7/8"x3 1/4" PINE.
FINISH { INSIDE 7/8"x3 1/4" BEADED.
 { OUTSIDE. BOARDS & BAT'NS.
CEILING HEIGHT. 9'-3"
LIGHTING NONE
SANITARY FACILITIES. NONE.



FLOOR PLAN.
SCALE = 1/8" = 1'-0"



JAN. 20. 1917.

PASSENGER STATION.
HELM, MO.