

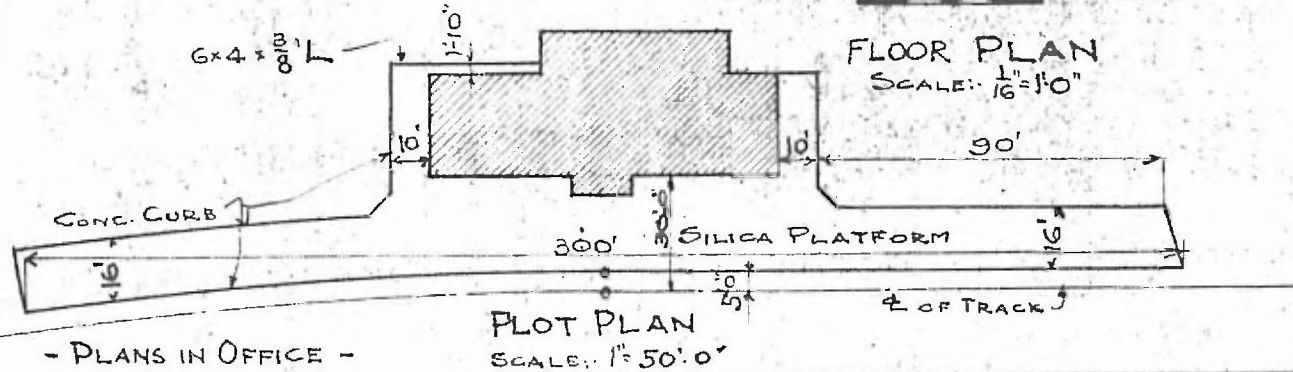
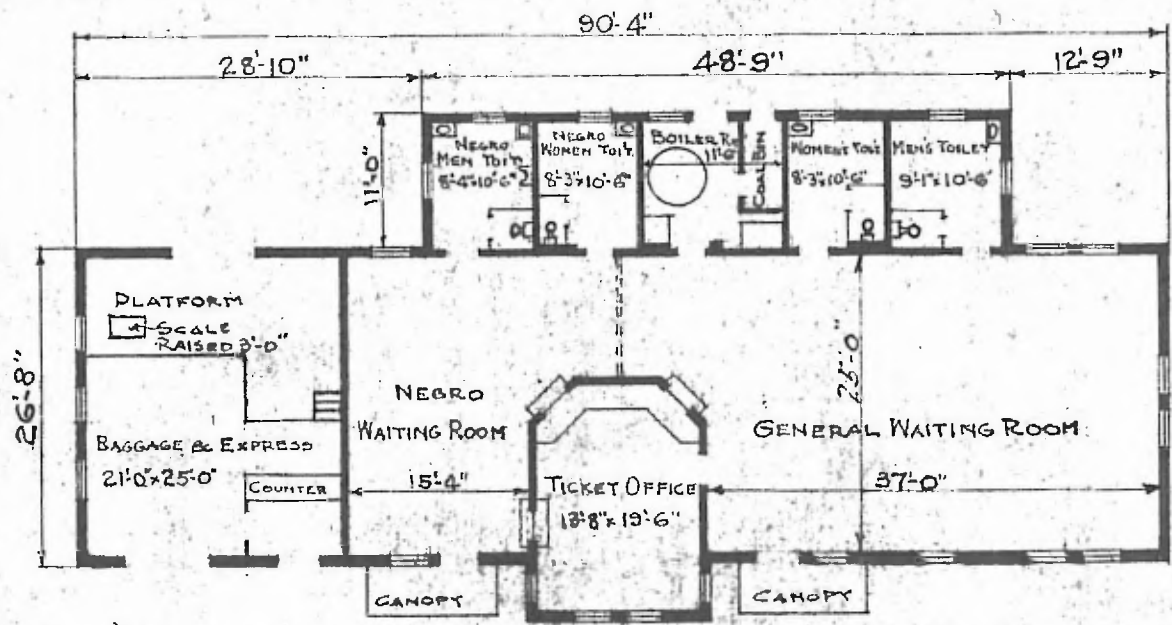
ERECTED 1914
 TYPE TILE
 FOUNDATION CONCRETE
 WALLS 10" HOLLOW TILE
 ROOF { TYPE FLAT-COMPOSITION ROOFING
 PITCH $\frac{3}{4}$ TO 1'-0"
 HEATING HOT WATER

FLOOR
 FINISH { INSIDE
 OUTSIDE
 CEILING HEIGHT
 LIGHTING
 SANITARY FACILITIES INSIDE TOILETS

WAIT. Rms. TERRAZZO-BAGG. RM. CEMENT
 PLASTER
 STUCCO
 WAIT. Rms. = 11'-6"; OFFICE = 10'-6"; BAGG. RM. = 12'-2"
 ELECTRIC

99

RIVER DIV
 LEACHVILLE 500
 A.T.R. NO. TE 227



FLOOR PLAN
 SCALE: $\frac{1}{16} = 1'-0"$

PLOT PLAN
 SCALE: $1" = 50'-0"$



PASSENGER STATION
 KENNETT, MO

- PLANS IN OFFICE -