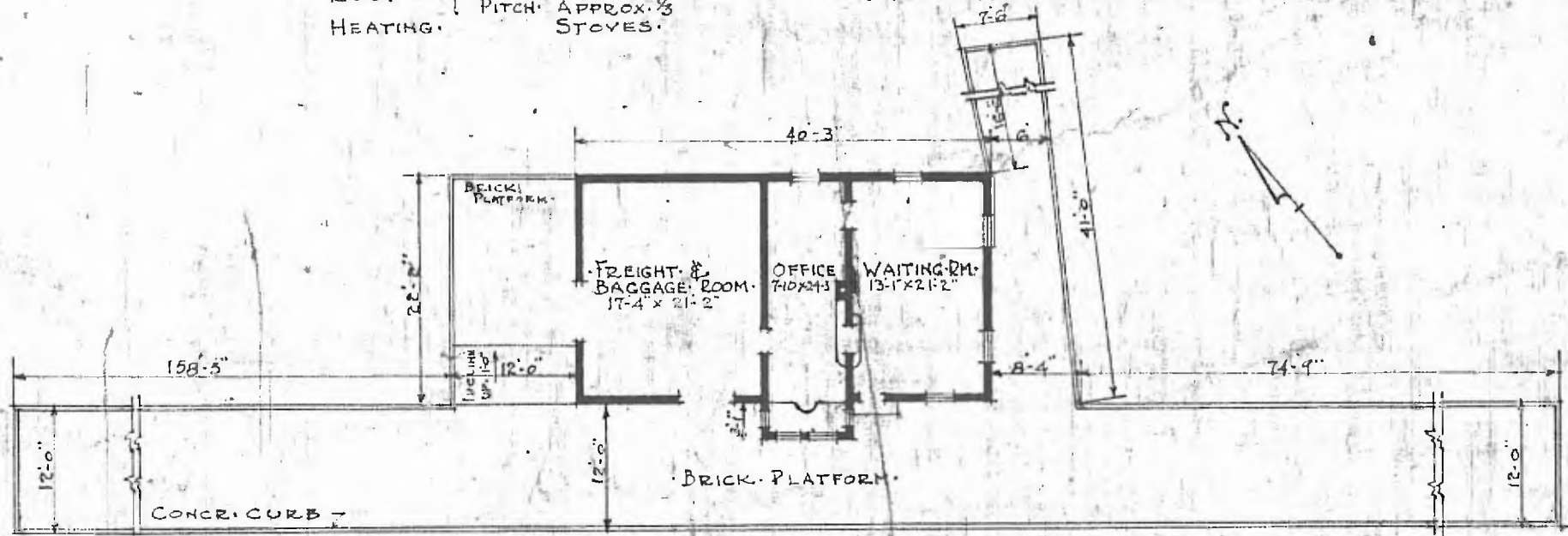


22

ERECTED - 1881  
 TYPE - FRAME  
 FOUNDATION - PILE HEADS  
 WALLS - 2x6 STUDS  
 ROOF - { TYPE - GABLE SHINGLES  
 PITCH - APPROX. 1/3  
 HEATING - STOVES

FLOOR - 3" x 3 1/4" YELLOW PINE  
 FINISH { INSIDE - 3" x 3/4" BD. CEILING  
 OUTSIDE - BOARDS & BATTS  
 CEILING HEIGHT - 11'-4" WAITING ROOM & FR. ROOM  
 LIGHTING - ELECTRIC WIRE (110 A.C.)  
 SANITARY FACILITIES - OUTSIDE TOILETS

FOR THE RY. DIV.  
 A. S. A. G. R. O. V. E. S. U. B.  
 STATION C 124



FLOOR PLAN  
 SCALE 1/8" = 1'-0"

COMBINATION STATION AT  
 LIBERAL MO.