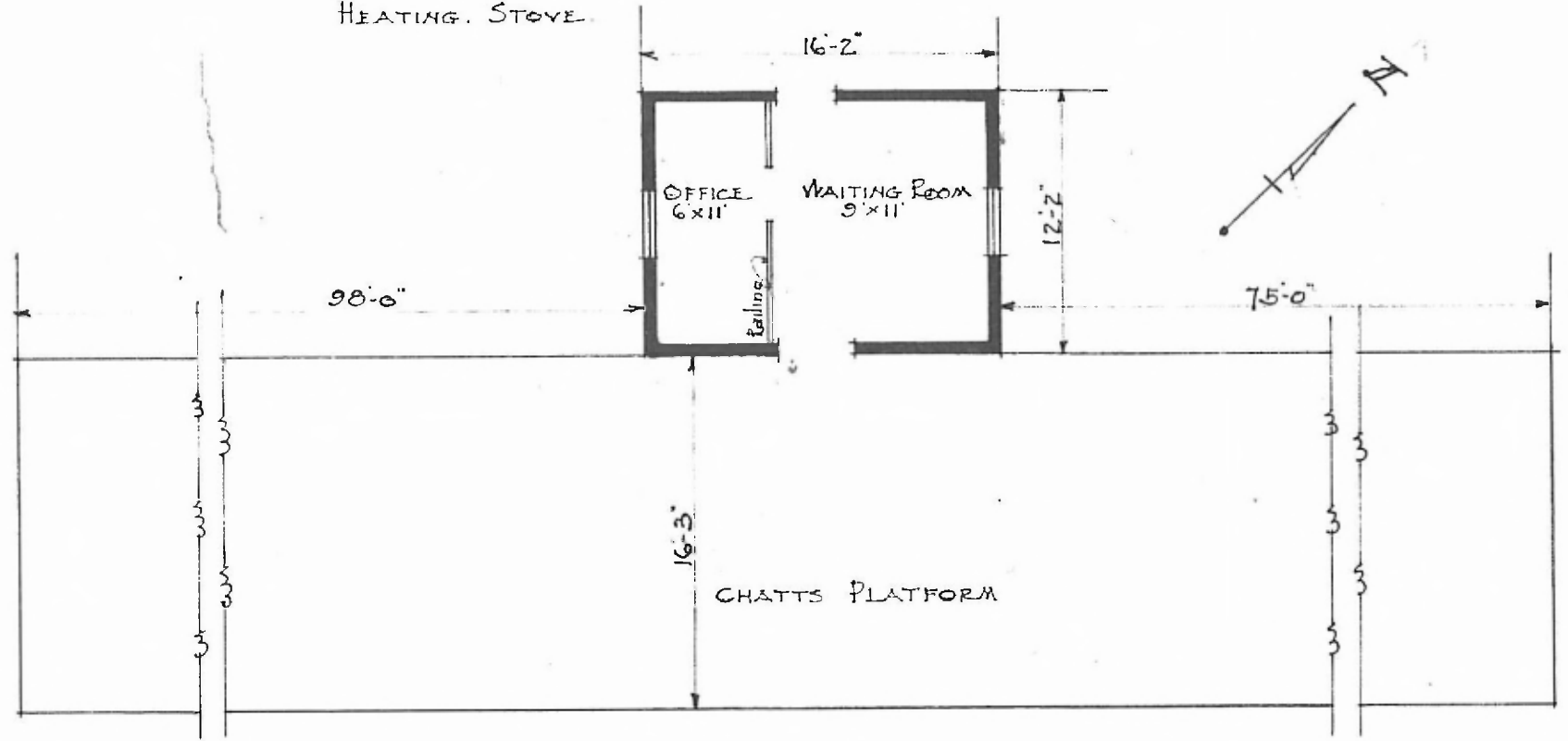


ERECTED 1900
 TYPE FRAME.
 FOUNDATION. BLOCKS
 WALLS 2"x4"
 ROOF { TYPE GABLE. SHINGLE.
 PITCH $\frac{1}{4}$
 HEATING. STOVE.

EASTERN DIV.
 SPRINGFIELD 500
 STA. NO. 262
 FLOOR. $\frac{7}{8} \times 3\frac{1}{4}$
 FINISH { INSIDE. $\frac{7}{8} \times 3\frac{1}{4}$ M & B.
 OUTSIDE. PLYING & BATTENS.
 CEILING HEIGHT. 9'-3"
 LIGHTING. LAMPS.
 SANITARY FACILITIES. OUTSIDE.



FLOOR PLAN.
 SCALE. $\frac{1}{8} = 1'-0"$

PASSENGER STATION.
 LOGAN, MO.