

ERECTED.
TYPE -
FOUNDATION
WALLS

1927.
FRAME - STUCCO.
CONCRETE.
6" STUDS.

ROOF { TYPE.
PITCH.
HEATING

COMPOSITION
1/4" APPROX.
STOVES.

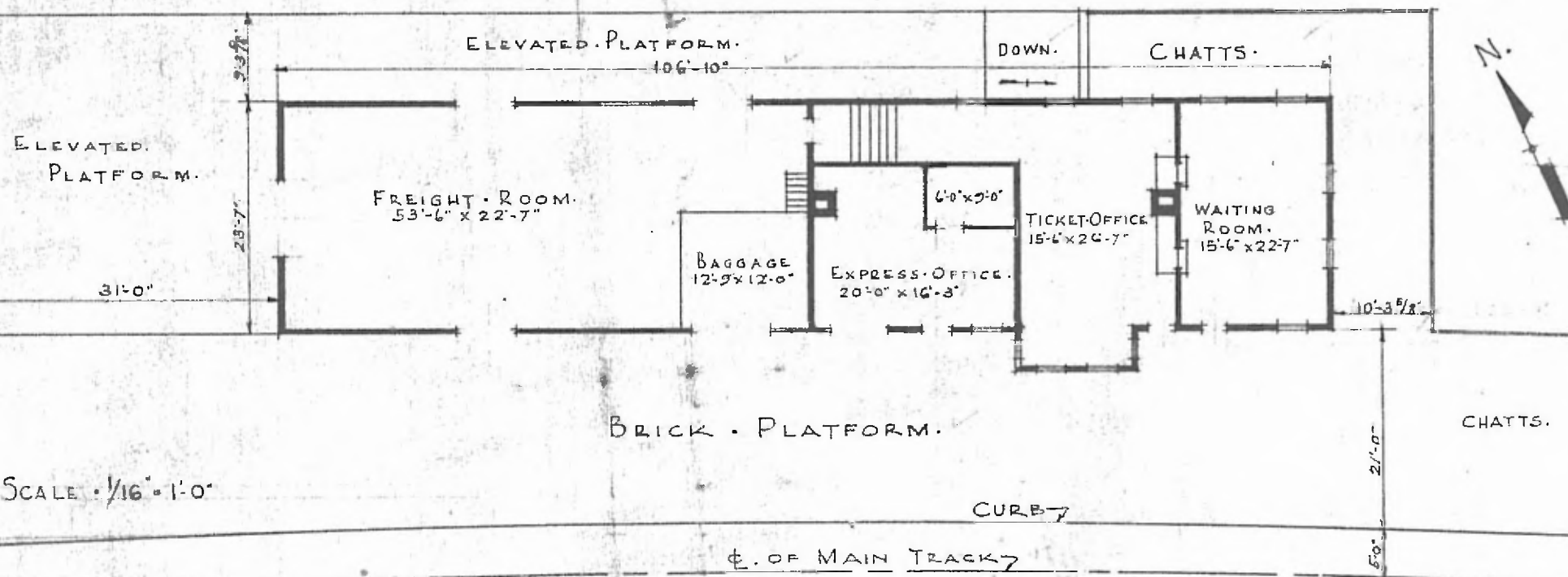
FLOOR
FINISH { INSIDE
OUTSIDE
CEILING HEIGHT.
LIGHTING
SANITARY FACILITIES.

CEMENT. FRT. RM. WOOD.
PLASTER -
STUCCO.
11'-3" FRT. 14'-9"
ELECTRIC.
OUTSIDE TOILETS.

6.

SOUTHERN DIV
WILLOW SPRING SUB
STA. NO. C249

HOUSE TRACK



SCALE 1/16" = 1'-0"

DATE - JULY 26 1927.

COMBINATION STATION - MANSFIELD - MO.