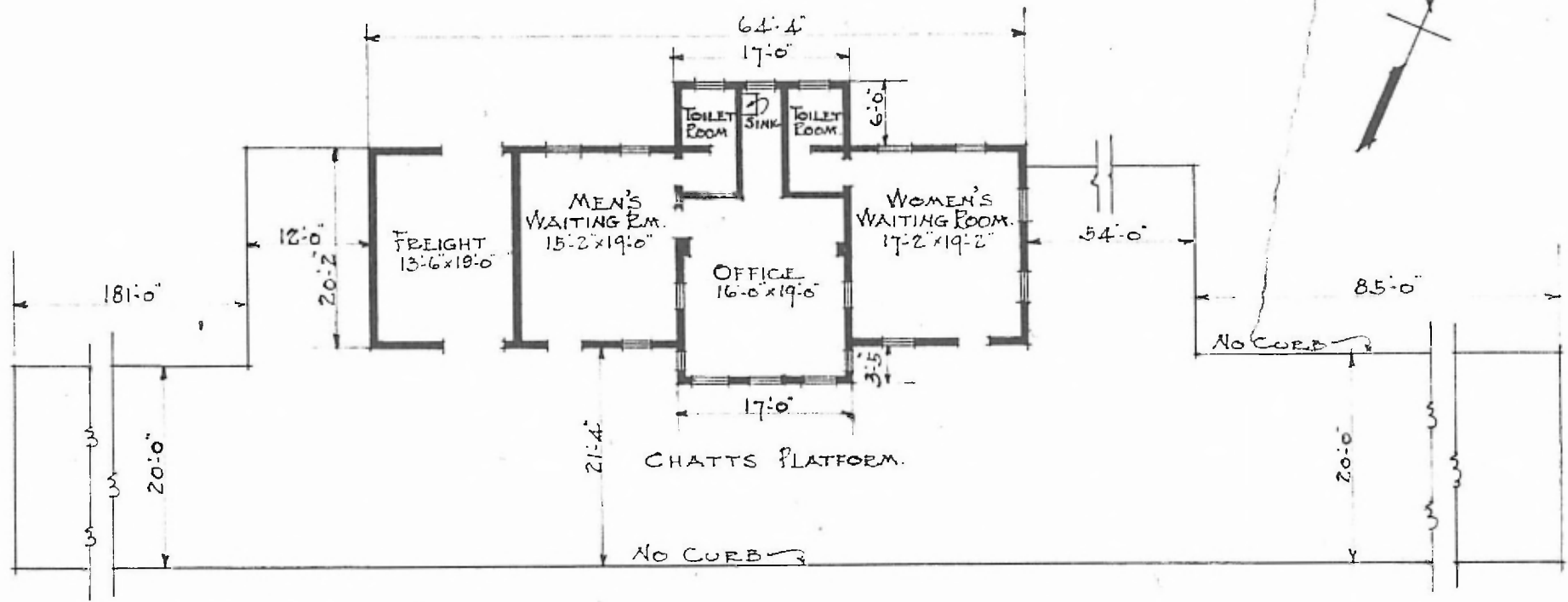


56

ERECTED 1887 EXTD
 TYPE FRAME.
 FOUNDATION PILE HEADS.
 WALLS 2"x4"
 ROOF { TYPE GABLE. SHINGLE
 PITCH $\frac{1}{4}$
 HEATING STOVES.

FLOOR $\frac{7}{8}$ " x $3\frac{1}{4}$ " PINE.
 FINISH { INSIDE. $\frac{7}{8}$ " x $3\frac{1}{4}$ " M. & D.
 OUTSIDE. DEEP SIDING
 CEILING HEIGHT 12'-10" FET. 13'-0"
 LIGHTING ELECTRIC
 SANITARY FACILITIES INSIDE.

EASTERN DIV.
 SPRINGFIELD SUB
 STD. NO. 264



FLOOR PLAN.
 SCALE $\frac{1}{16}$ " = 1'-0"

PASSENGER STATION.
 MARIONVILLE, MO.

MAY 31 1915.