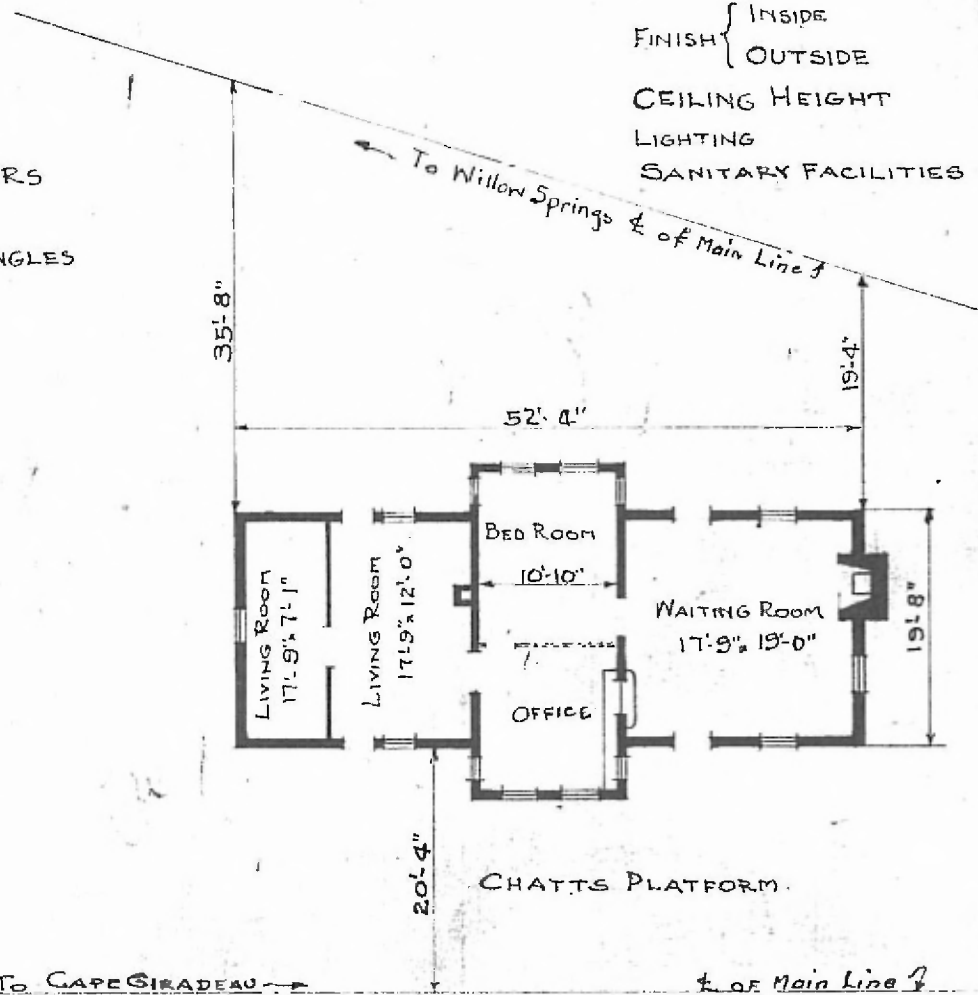


58

ERECTED 1901
 TYPE FRAME
 FOUNDATION STONE PIERS
 WALLS LOGS
 ROOF { TYPE GABLE-SHINGLES
 PITCH $\frac{1}{3}$
 HEATING STOVES

FLOOR $7\frac{1}{8} \times 3\frac{1}{4}$
 FINISH { INSIDE
 OUTSIDE $7\frac{1}{8} \times 3\frac{1}{4}$ M.&B.
 CEILING HEIGHT 9'11"
 LIGHTING OIL
 SANITARY FACILITIES OUTSIDE TOILETS
 CYPRESS LOGS

RIVER DIV.
 HOXIE SUB
 STATION TAITS



NO CURBS

FLOOR PLAN
 $\frac{1}{16}'' = 1'-0''$

PASSENGER STATION
 MINGO, MO

Aug. 16, 1915