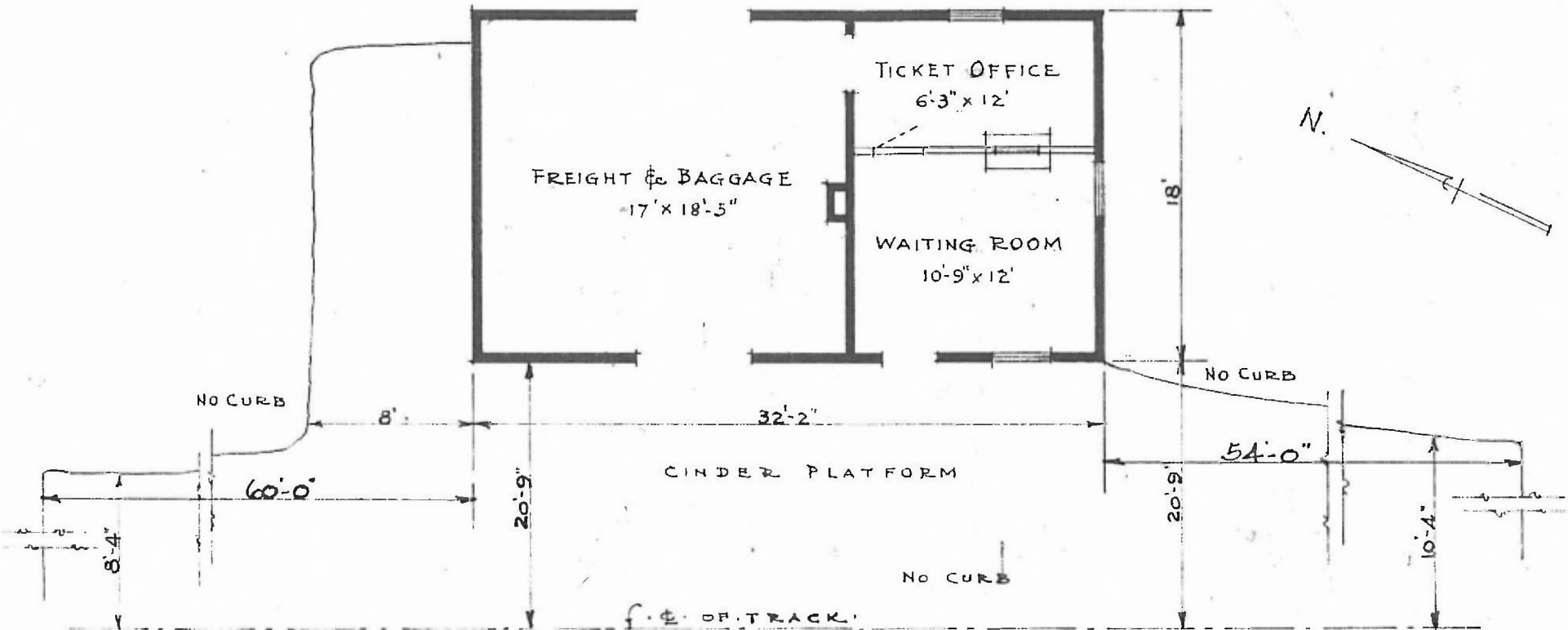


ERECTED 1884.
 TYPE FRAME
 FOUNDATION PILE HEADS
 WALLS 2" x 6"
 ROOF TYPE - GABLE - SHINGLES
 PITCH - 1/3
 HEATING STOVES

FLOOR FINISH { INSIDE
 { OUTSIDE
 CEILING HEIGHT 12'-4"
 LIGHTING OIL LAMPS
 SANITARY FACILITIES - OUTSIDE TOILET.

EASTERN DIV.
 CLINTON 5013
 STA. NO. D 175



PASSENGER STATION AT
 PEARL MO.

FLOOR PLAN
 SCALE: 1/8" = 1'-0"