

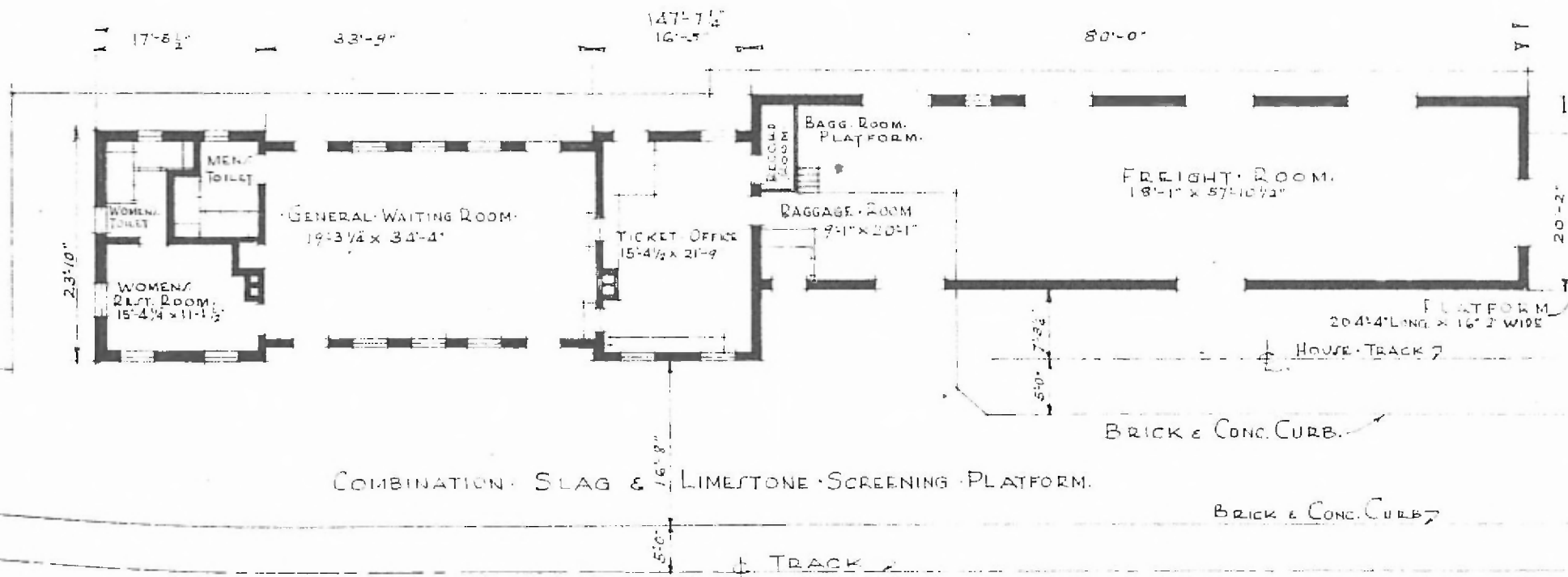
ERECTED: MARCH 6, 1928.  
 TYPE: BRICK STUCCO.  
 FOUNDATION: CONCRETE  
 WALLS: BRICK.  
 ROOF: { TYPE: COMPOSITION  
 PITCH: 9/12 TO 12"  
 HEATING: STOVES

FLOOR:  
 FINISH: { OUTSIDE  
 INSIDE.  
 CEILING: HGT.  
 LIGHTING.  
 SANITARY FAC.

WAIT. RM. & TOILETS. COMPOSITION.  
 OFFICE. WOOD. BAGG. FR. WOOD  
 STUCCO  
 PLASTER.  
 WTR. ROOM 11-3" FR. 12-5 7/8"  
 ELECTRIC.  
 INSIDE TOILETS

61.

RIVER 171V  
 HOXIE SUB-  
 STA. NO. TA 195



COMBINATION SLAG & LIMESTONE SCREENING PLATFORM.

BRICK & CONC. CURB.

BRICK & CONC. CURB.

TRACK

FLOOR PLAN.  
 SCALE 1/8" = 1'-0"



DATE: MARCH 6, 1928.

COMBINATION STATION.  
 POPLAR BLUFF, MO.