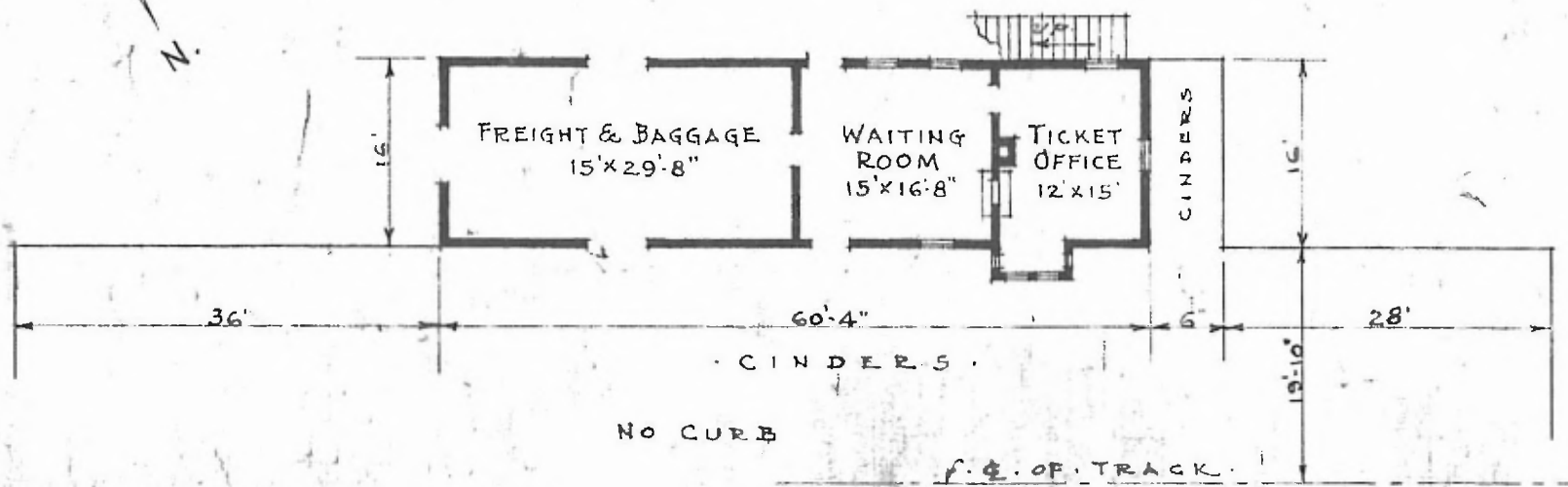
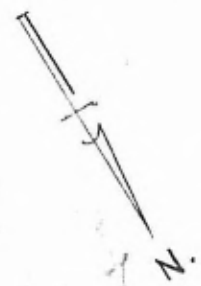
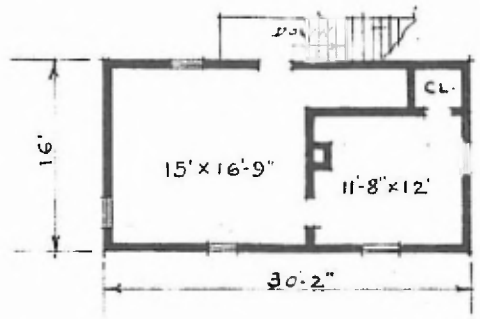


ERECTED 1884  
 TYPE FRAME  
 FOUNDATION BLOCKS & PILE HEADS  
 WALLS 2" x 6"  
 ROOF { TYPE - GABLE - SHINGLES  
 PITCH 1/3  
 HEATING STOVES

FLOOR 3/4" x 3/4" Y. PINE  
 FINISH { INSIDE 3/4" x 3/4" B'D CEILING  
 OUTSIDE BOARDS & BATTENS  
 CEILING HEIGHT WAIT'G RM = 8'5" - FET R'M = 8'0" - 2ND FL = 7'9"  
 LIGHTING OIL LAMPS  
 SANITARY FACILITIES - OUTSIDE TOILETS.

EASTERN DIV.  
 CLINTON 543  
 STR. No. D 65

2ND FLOOR PLAN  
 SCALE: 1/16" = 1'-0"



PASSENGER STATION AT  
 QUICK CITY MO.

1ST FLOOR PLAN  
 SCALE: 1/16" = 1'-0"