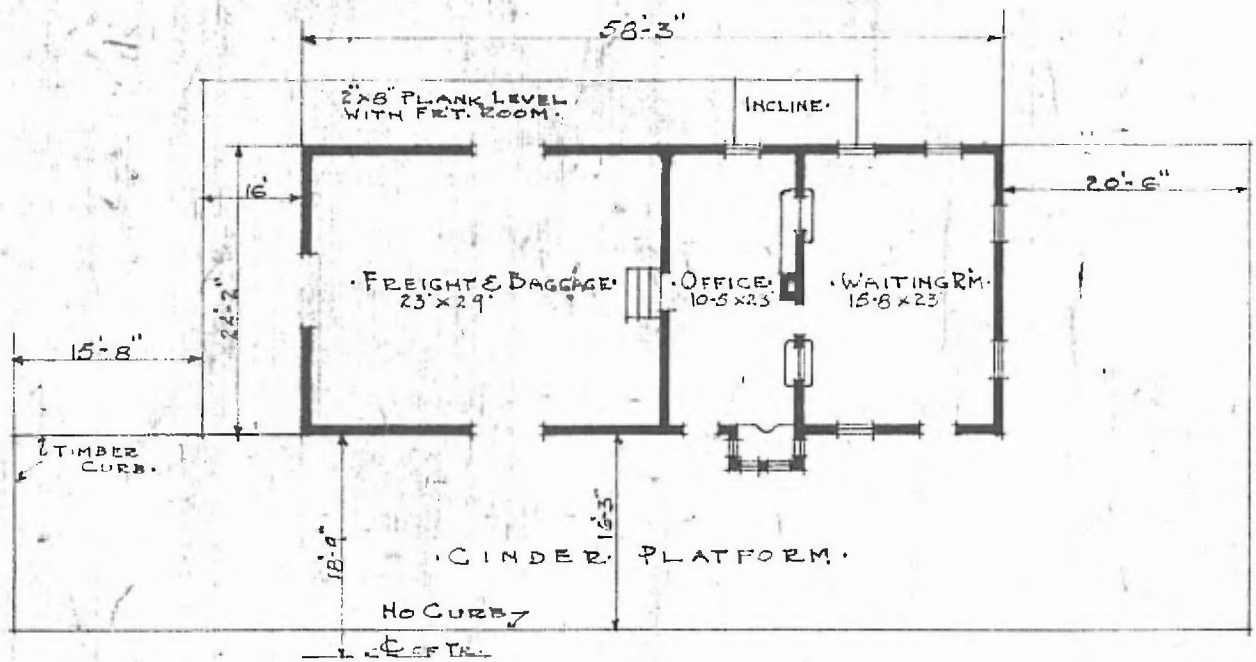


ERECTED: 1880
 TYPE: FRAME
 FOUNDATION: PILE HEADS
 WALLS: 2"x6" STUDS
 ROOF: [TYPE: GABLE SHINGLES.
 PITCH: APPROX 1/3]
 HEATING: STOVES

FLOOR: 3/4"x3 3/4" Y. PINE
 FINISH: { INSIDE: 3/4"x3 3/4" DD. CEILING
 OUTSIDE: BOARD & BATT
 CEILING HEIGHT: WAITING RM. 12'-4" FRT. 10'-4"
 LIGHTING: LAMPS
 SANITARY FACILITIES: OUTSIDE TOILETS



FLOOR PLAN
 SCALE 1/16" = 1'-0"

COMBINATION STATION
 RICH HILL, MO.