

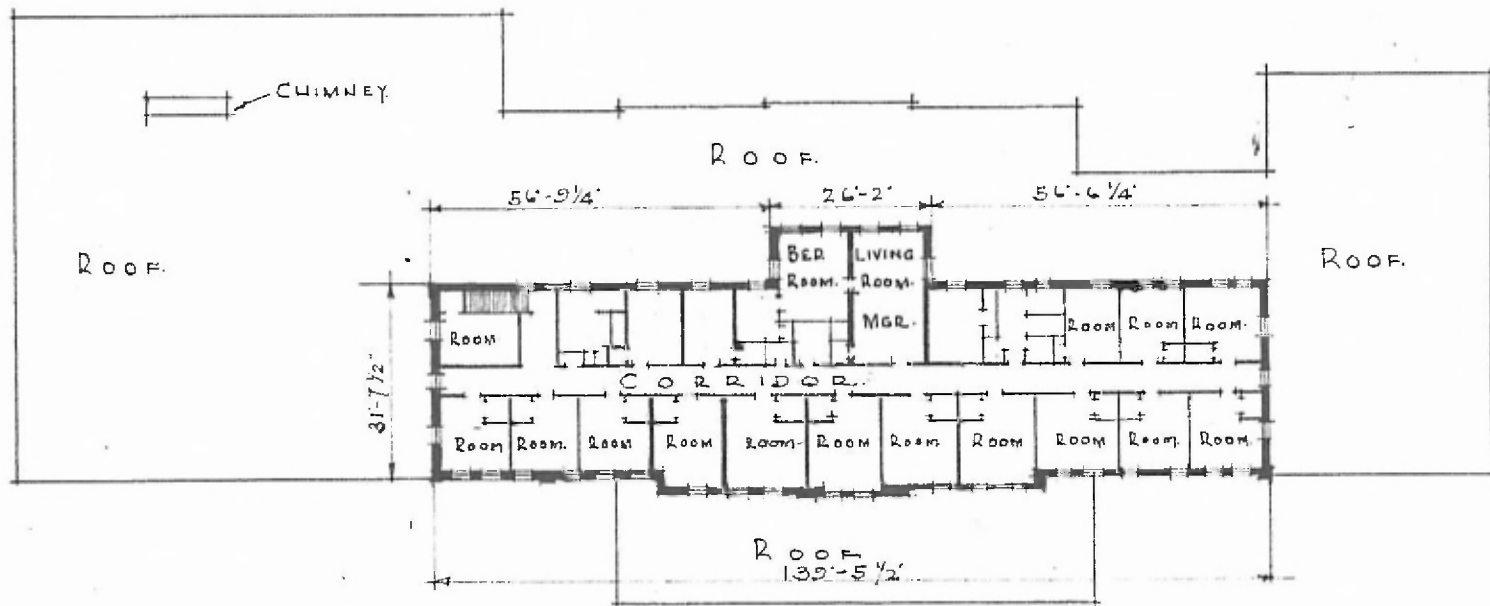
ERECTED . 1926
 TYPE . BRICK STUCCO.
 FOUNDATION . CONCRETE.
 WALLS . 13" .
 ROOF { TYPE
 PITCH
 HEATING . TILE & COMB .
 APPROX. 1/4 .
 STEAM .

FLOORS .
 FINISH { OUTSIDE
 INSIDE .
 CEILING . HEIGHT .
 LIGHTING .
 SANITARY FACILITIES .

ASBESTOLITH; CEMENT; WOOD.
 STUCCO .
 PLASTER & BRICK.
 WTG. RMS. 10'-6" DIN. ROOM 11'-3" FR. 12'-5"
 ELECTRIC .
 INSIDE TOILETS .

EASTERN DIV.
 ROLLING 5073
 STA. No. 239

51.



SECOND FLOOR PLAN
 SCALE 1/32" = 1'-0"

PASSENGER STATION
 SPRINGFIELD MO.