

ERECTED
 TYPE
 FOUNDATION
 WALLS
 ROOF { TYPE
 PIECH
 HEATING

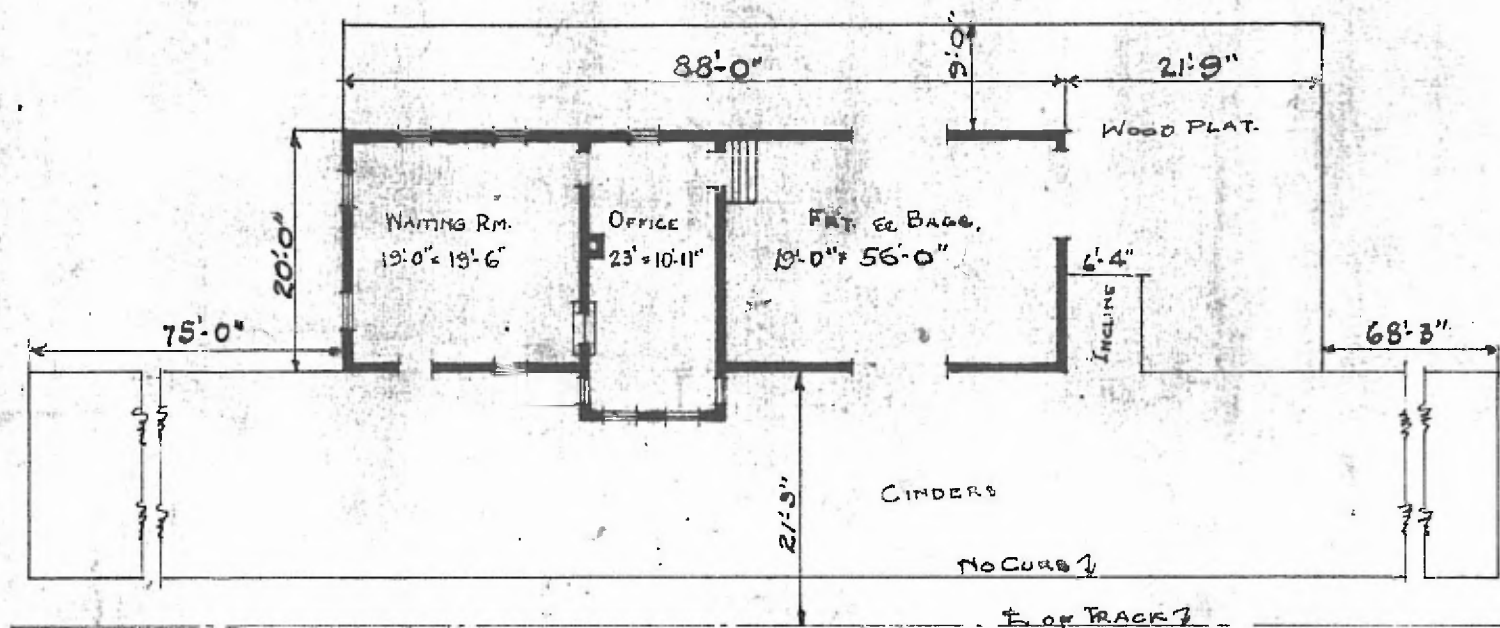
FRAME
 PILE HEADS
 2x6
 GABLE SHINGLES
 $\frac{1}{3}$
 STOVES

FLOOR
 FINISH { INSIDE
 OUTSIDE
 CEILING HEIGHT
 LIGHTING
 SANITARY FACILITIES

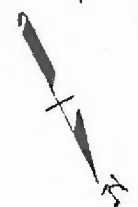
$\frac{7}{8} \times 3\frac{1}{2}$ " M.
 $\frac{7}{8} \times 3\frac{1}{2}$ " M & B.
 BOX & BATT. - $\frac{7}{8} \times 5\frac{1}{2}$ " D.S.
 WAITING RM. - 12'-0" - FRT. RM. 9'-7"
 ELECTRIC
 OUTSIDE TOILETS

RIVER DIV.
 ST. LOUIS SUB
 STA. NO. T-74

13



FLOOR PLAN
 SCALE: $\frac{1}{16}$ " = 1'-0"



COMBINATION STATION
 ST. MARY'S, MO.

MARCH 7, 1918