
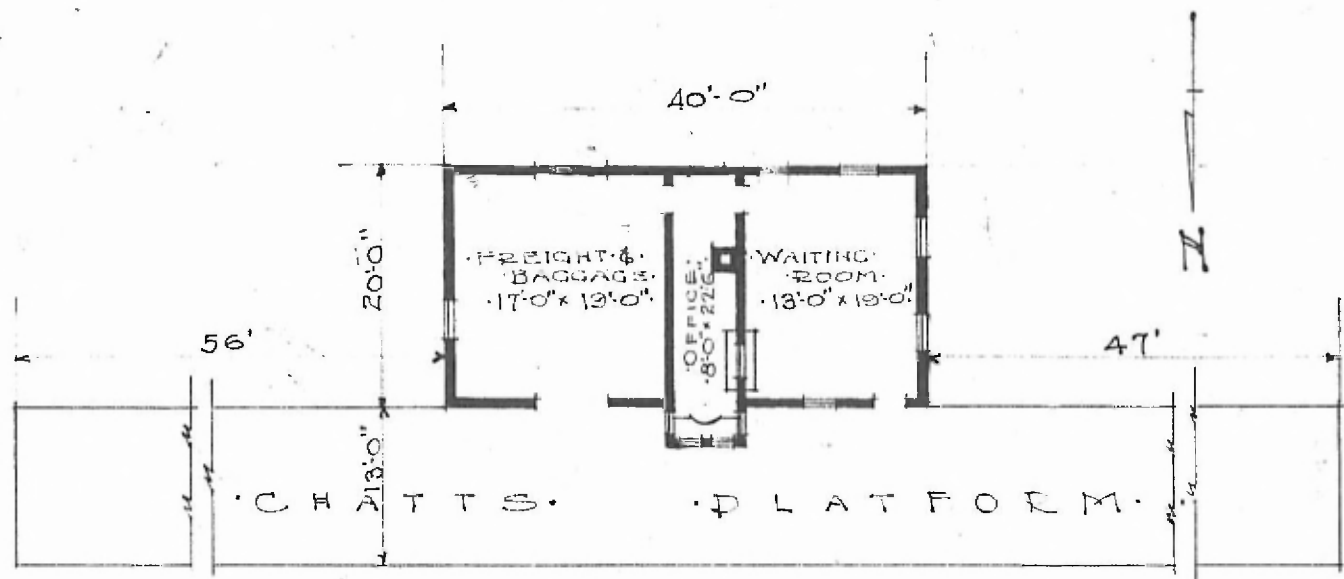


- ERECTED: 1883
- TYPE: FRAME
- FOUNDATION: BLOCKS & PILE HEADS
- WALLS: 2" x 6"
- ROOF: TYPE: GABLE SHINGLES  
PITCH: 4
- HEATING: STOVES
- FLOOR: 7/8" x 3/4" Y.P.
- FINISH: INSIDE: 7/8" x 3/4" M. & B.  
OUTSIDE: BOARDS & BATTENS.
- CEILING HEIGHT: 10'-10"
- LIGHTING: OIL LAMPS
- SANITARY FACILITIES: OUTSIDE TOILETS.

SOUTHERN DIV.  
WILLOW SPRINGS SUB.  
STA. No. C 212

FLOOR PLAN  
SCALE 1/16" = 1'-0"

COMBINATION STATION  
TURNER MO.

AUG. 1, 1916.