

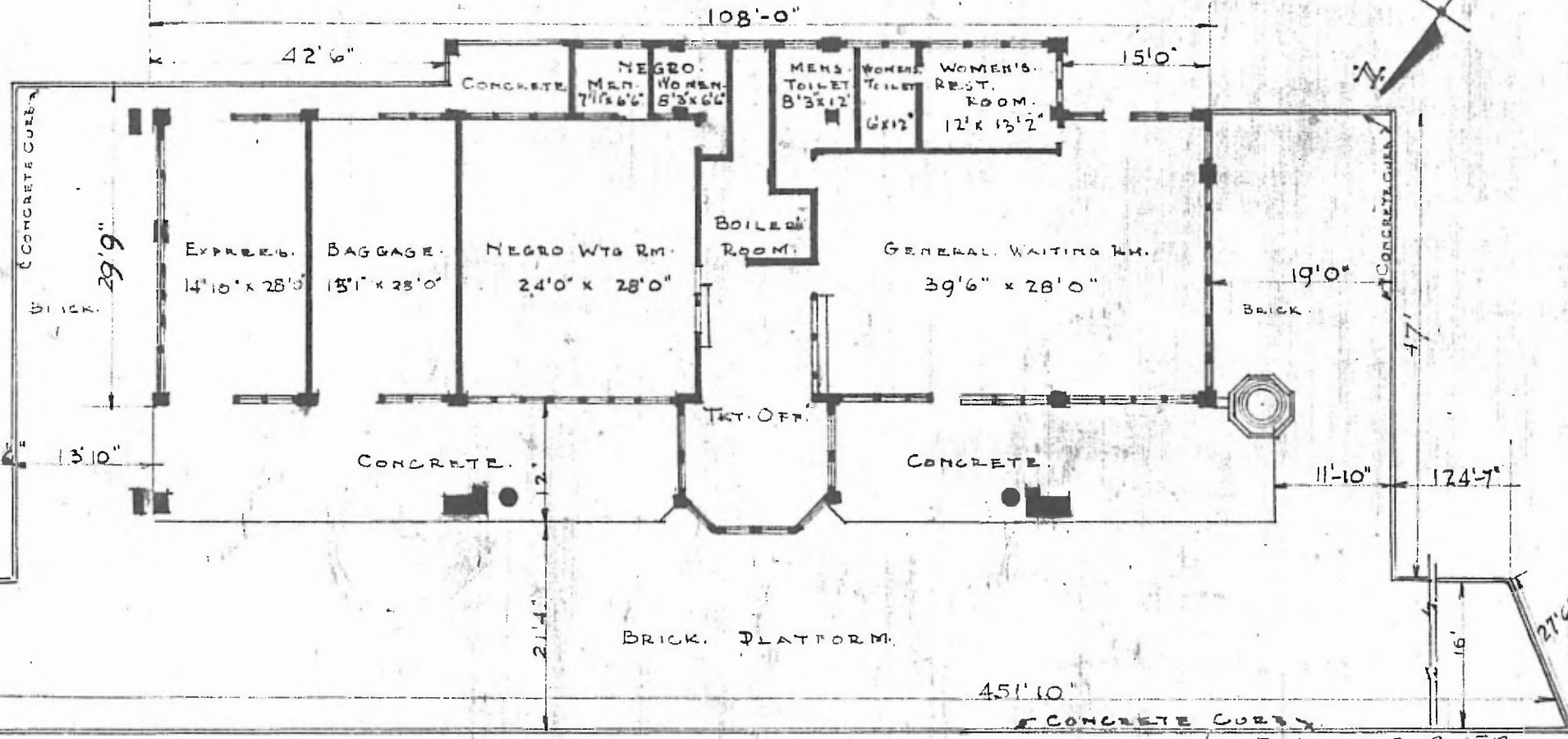
16

ERECTED. 1913.  
TYPE. { CURTIS No 5  
CONCRETE  
FOUNDATION CONCRETE.  
WALLS. CONCRETE.

ROOF { TYPE TAR & GRAVEL  
PITCH FLAT  
HEATING HOT WATER.  
LIGHTING. ELEC AC 110 VOLTS.

FLOOR. CONCRETE  
FINISH { INSIDE. PLASTER.  
OUTSIDE. CONCRETE.  
CEILING HEIGHTS. 13'6"

SANITARY  
FACILITIES  
OUTSIDE.



FLOOR PLAN.  
SCALE 1/16" = 1'0"

SW - DIV. RED RIVER  
SUB. DIV. SHERMAN  
STA. No. E-548

PASSENGER STATION AT  
ADA, OKLA.

OCT. 18 1913.