

16

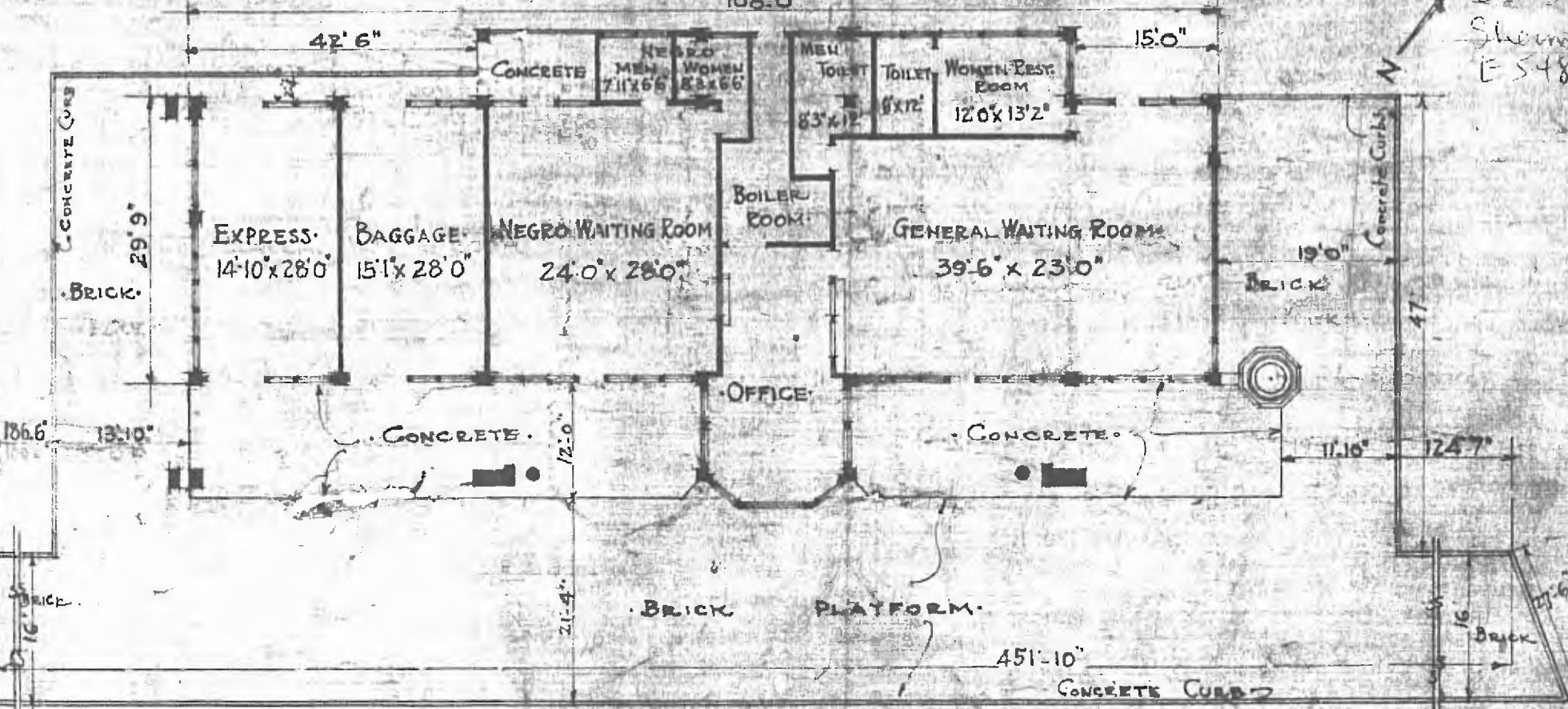
ERECTED. 1913
TYPE. CURTISS No 5.
FOUNDATION. CONCRETE.
WALLS. CONCRETE.

ROOF { TYPE: TAR & GRAVEL.
PITCH FLAT
HEATING: HOT WATER.
LIGHTING: ELEC. A.C. 110. VOLT.
108.0"

FLOOR: CONCRETE
FINISH { INSIDE: PLASTER.
OUTSIDE: CONCRETE.
CEILING HEIGHT 13'-6"

SANITARY FACILITIES ON INSIDE.

S.W.D
Sheets
E-548



FLOOR PLAN
SCALE 1/16" = 1'0"

PASSENGER STATION AT
ADA OKLA

Oct. 18. 1915.