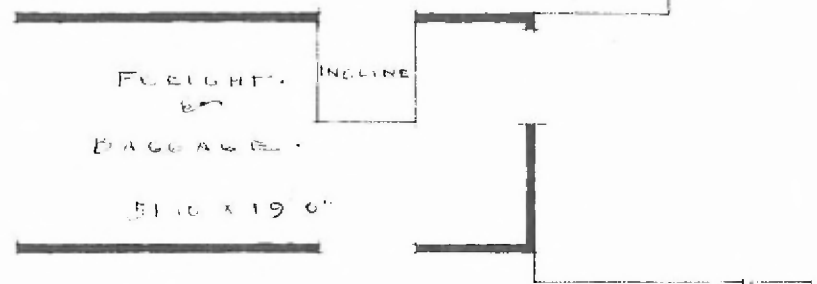
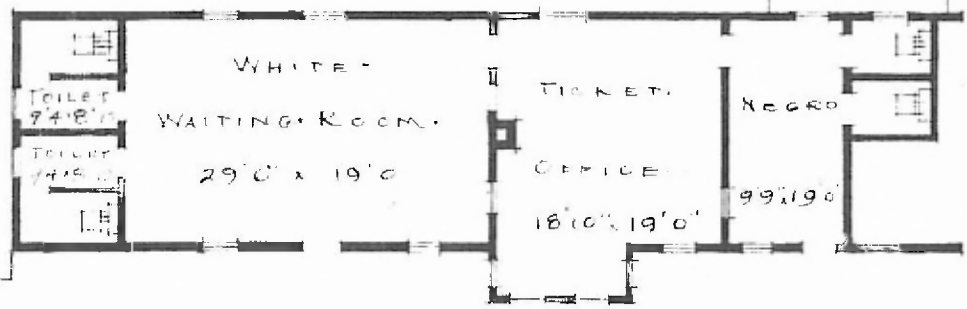
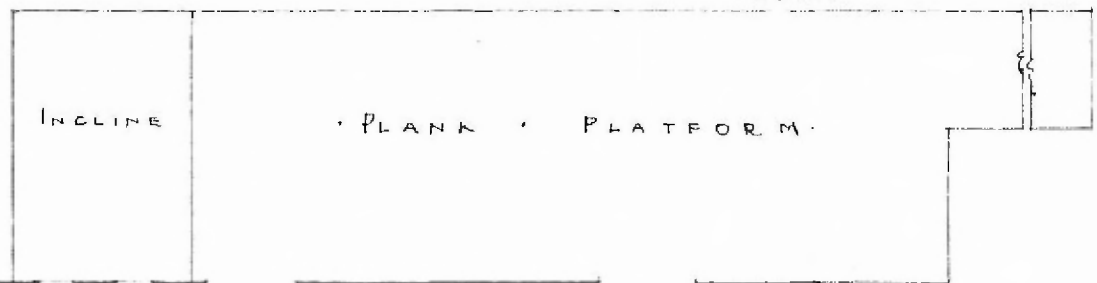
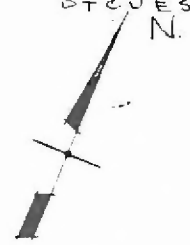


ELECTRICAL: 1903.
 TYPE: FRAME.
 FOUNDATION: FIRE HEARD.
 ROOF: TYPE: GABLE & RINGLE.
 PITCH: APPROX. 1/3.
 WALLS: 2-6" STUO.
 HEATING: STOVES.

FLOORS: INSIDE.
 FINISH: OUTSIDE.
 CEILING: HEIGHT.
 LIGHTING.
 SANITARY: FACILITIES: INSIDE TOILET.

3/4" x 3/4" YELLOW PINE.
 3/4" x 3/4" BEARDS GELING.
 1/2" DROP SIDING.
 12'2"; FREIGHT 18'4".
 ELECTRIC.

DIV. SOUTHWESTERN
 SUB DIV. CHICKASHA
 STA. NO. 6687



GRAVEL PLATFORM

CHICKASHA

CENTER OF TRACK

PASSENGER STATION AT
 ALTUS OKLA.

NOVEMBER 21 1916