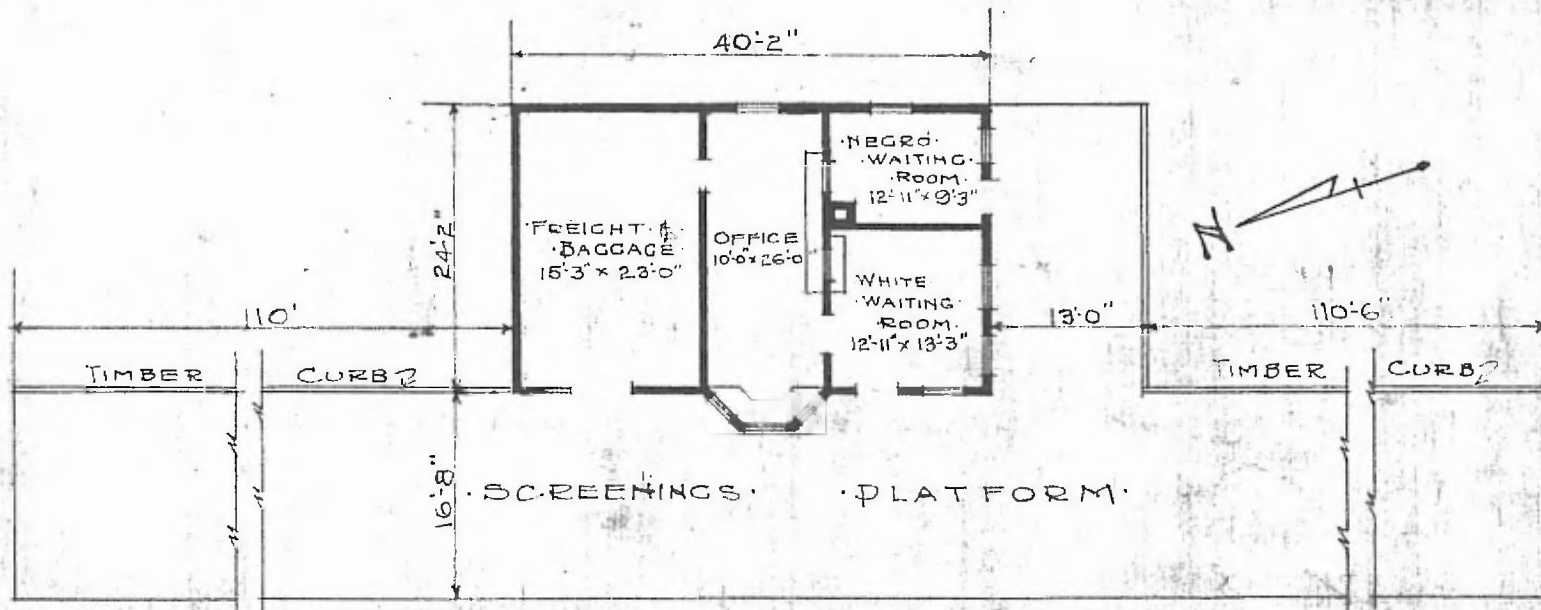


ERECTED: 1908
 TYPE: FRAME
 FOUNDATION: CONCRETE
 WALLS: 2" x 6"
 ROOF: TYPE: H.D. SHINGLES
 PITCH: $\frac{1}{3}$
 HEATING: STOVES

FLOOR: $\frac{3}{4}$ " x $\frac{3}{4}$ " Y.P. SUBDIV.
 FINISH: { INSIDE: CHICKASHA
 OUTSIDE: $\frac{3}{8}$ " M. & B. STA. No 6573
 CEILING HEIGHT: DROP SIDING 11'-4"
 LIGHTING: OIL LAMPS
 SANITARY FACILITIES: OUTSIDE TOILETS

73



FLOOR PLAN
 SCALE $\frac{1}{16}$ " = 1'-0"

COMBINATION STATION
 AMBER, OKLA.

Nov. 4, 1916.