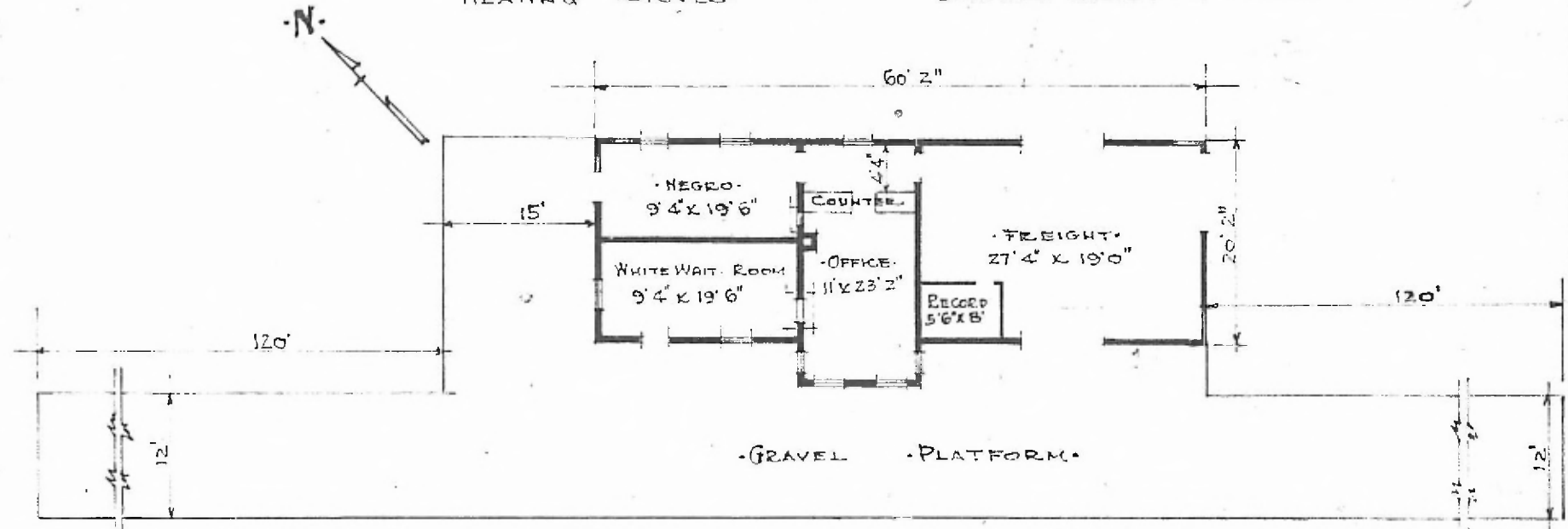


ERECTED. 1902.  
 TYPE. FRAME.  
 FOUNDATION. PILE HEADS.  
 WALLS. 2"X6"  
 ROOF { TYPE. GABLE SHINGLE  
 PITCH. 1/3  
 HEATING. STOVES.

FLOOR. 3/4" X 3 1/4" Y. PINE.  
 FINISH { INSIDE. 3/4" X 3 1/4" ED. CEILING.  
 OUTSIDE. BOARD & BATTIS.  
 CEILING HEIGHT. 12'0" FEB. 13'1"  
 LIGHTING. LAMPS.  
 SANITARY FACILITIES. OUTSIDE TOILET.



DIV. CENTRAL  
 SUB. DIV. ARDMORE  
 STA. NO V-625

FLOOR PLAN.  
 SCALE 1/16" = 10"

COMBINATION STATION AT  
 AYLESWORTH OKLA.

JUNE 18 1915.