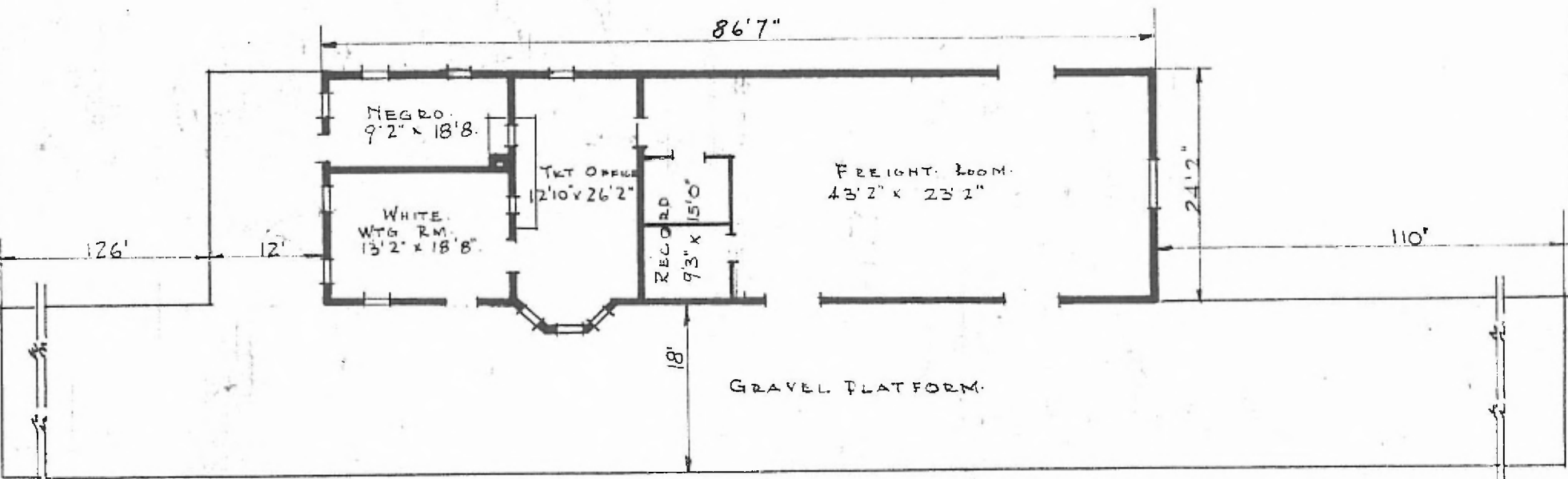


SW - DIV. RED RIVER
 SUB. CREEK
 STA. No. E-456

3

ERECTED 1900.
 TYPE. FRAME.
 FOUNDATION. PILE HEADS.
 WALLS 2"x6"
 ROOF { TYPE. HIP SHGLS.
 PITCH 1/2
 HEATING. STOVES.

FLOOR. 3/4" Y.PINE
 FINISH. { INSIDE. 3/4" BD. CEILING.
 OUTSIDE. 1 X 6 DROP SIDING.
 CEILING HEIGHTS. 11' 3/2"
 LIGHTING. GAS LAMPS.
 SANITARY FACILITIES. OUTSIDE TOILETS.



FLOOR PLAN
 SCALE 1/16" = 1'0"



COMBINATION STATION AT
 BEGGS, OKLA.

SEPT 16, 1915.