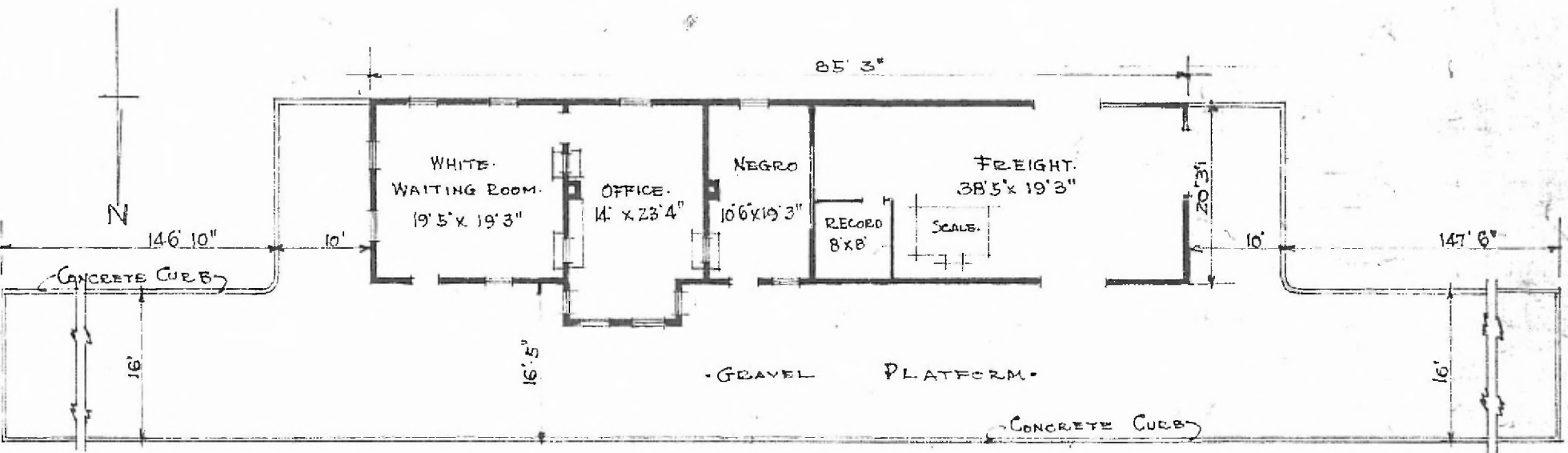


ERECTED. 1902.  
 TYPE. FRAME.  
 FOUNDATION. PILE HEADS.  
 WALLS. 2" x 6"  
 ROOF { TYPE. FRAME GABLE.  
 PITCH. 1/3  
 HEATING. STOVES.

FLOOR. 3/4" x 3 1/4" Y. PINE.  
 FINISH { INSIDE. 1/2" x 3 1/4" BD. CEILING.  
 OUTSIDE. BOARD & BATTIS.  
 CEILING HEIGHT. 11' 11"  
 LIGHTING. LAMPS.  
 SANITARY FACILITIES. OUTSIDE TOILET.



FLOOR PLAN  
 SCALE 1/16" = 1'0"

DIV. CENTRAL  
 SUB. DIV. ARDMORE  
 STA. NO. V-590

COMBINATION STATION AT  
 BENNINGTON OKLA.

JUNE 2 1915