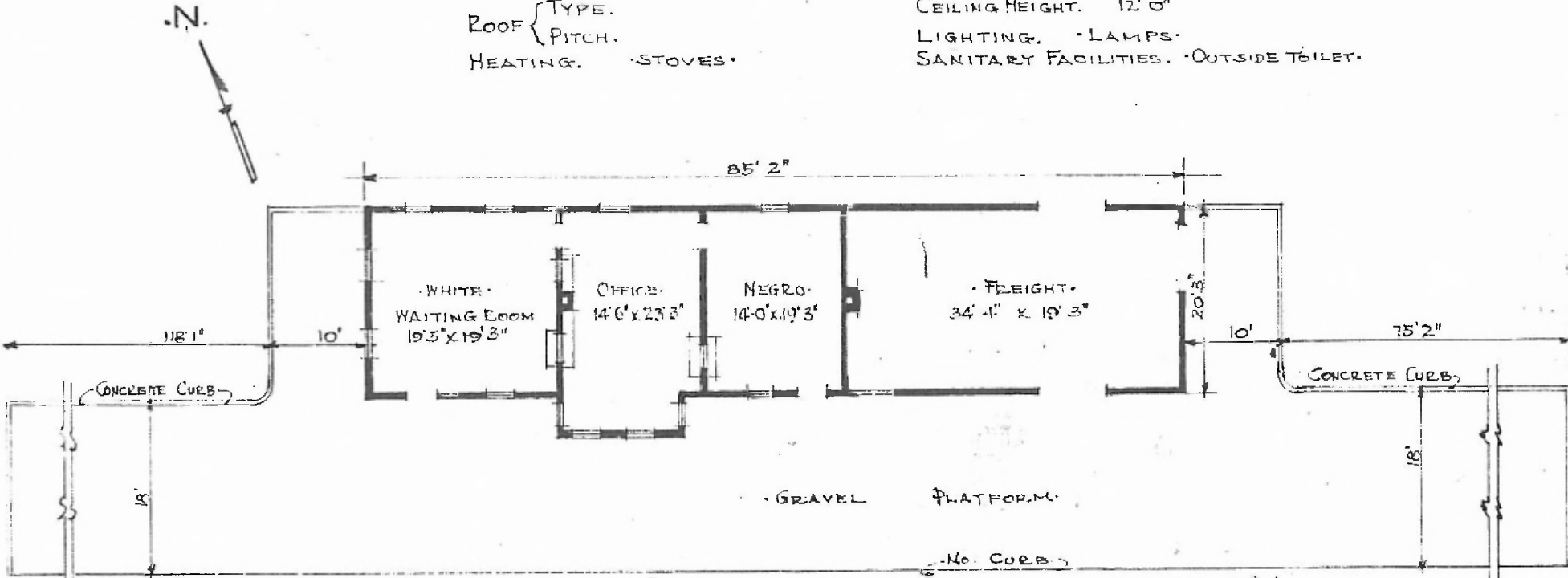


ERECTED. 1902.
 TYPE. FRAME.
 FOUNDATION. PILE HEADS.
 WALLS. 2"x6"
 ROOF { TYPE.
 PITCH.
 HEATING. STOVES.

FLOOR. 3/4"x3 1/4" Y. PINE.
 FINISH { INSIDE. 3/2"x3 1/4" BR. CEILING.
 OUTSIDE. BOARD & BATT.
 CEILING HEIGHT. 12' 0"
 LIGHTING. LAMPS.
 SANITARY FACILITIES. OUTSIDE TOILET.



FLOOR PLAN.
 SCALE 1/16" = 1' 0"

DIV. CENTRAL
 SUB. DIV. ARDMORE
 STA. No. V-597

COMBINATION STATION AT
 BOKCHITO OKLA.

JUNE 16-1915.